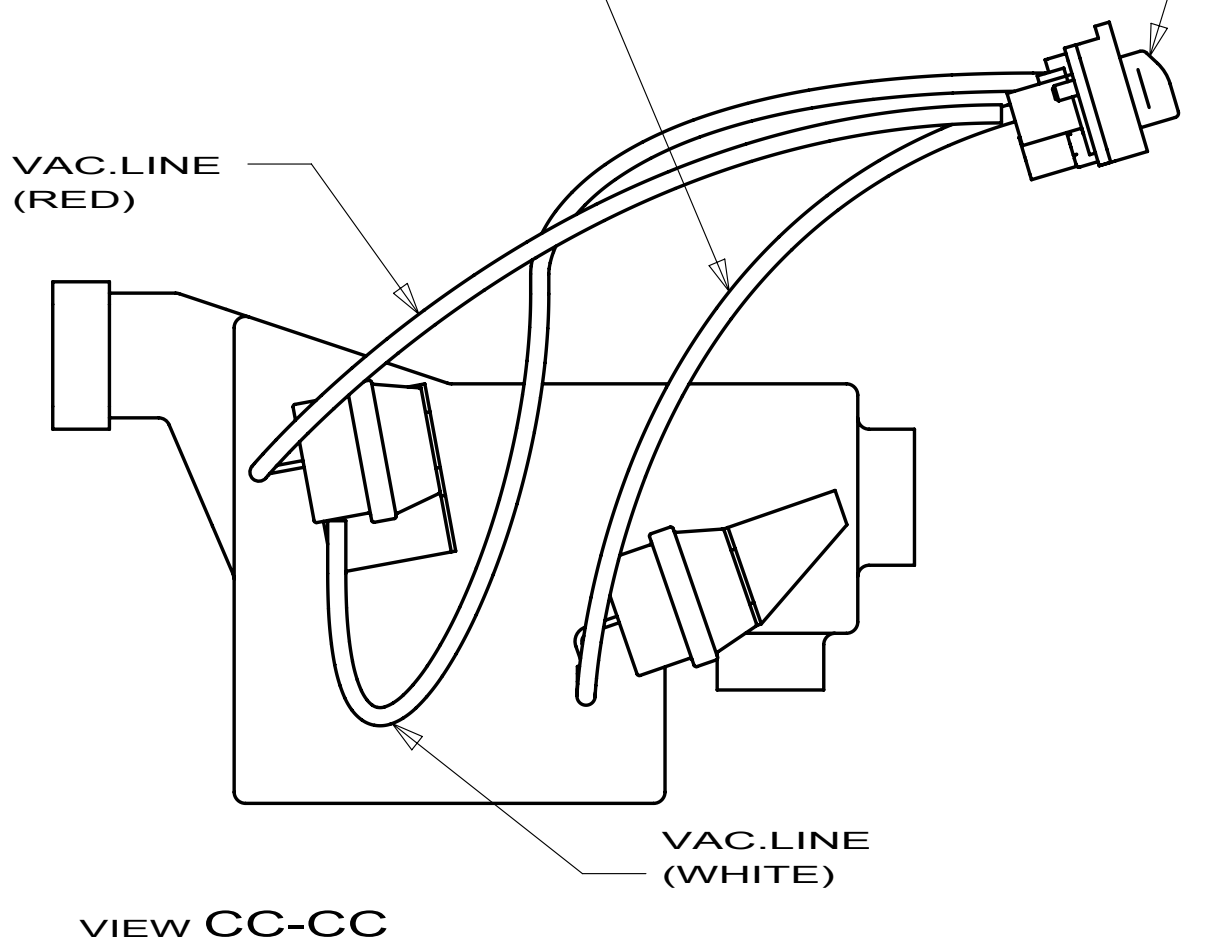
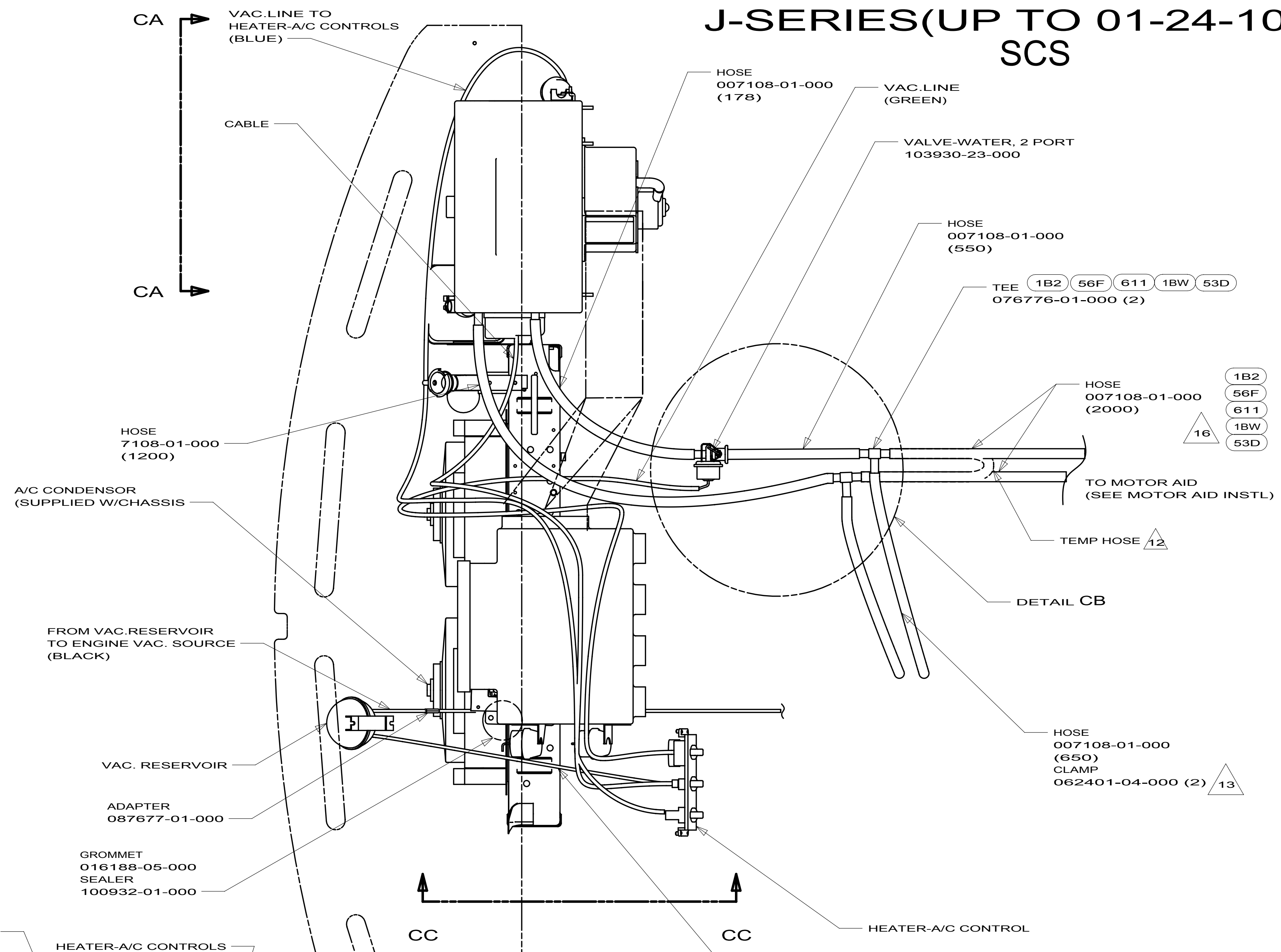
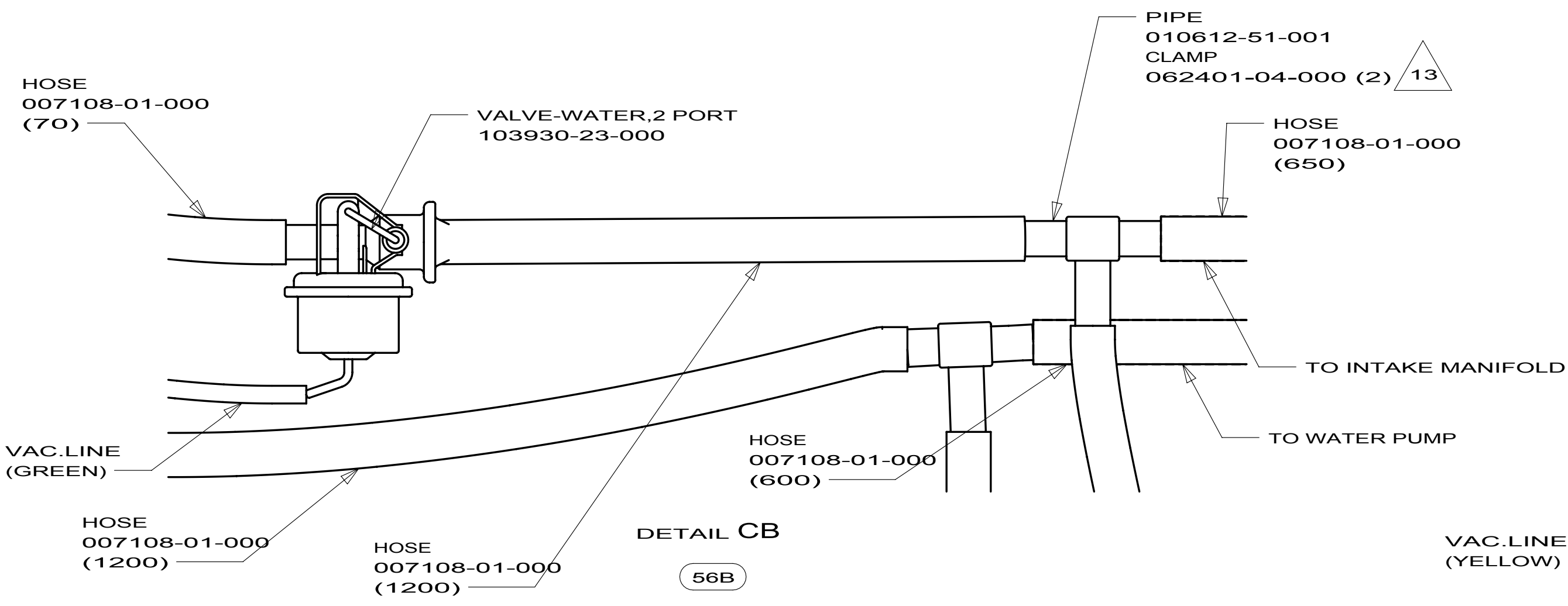
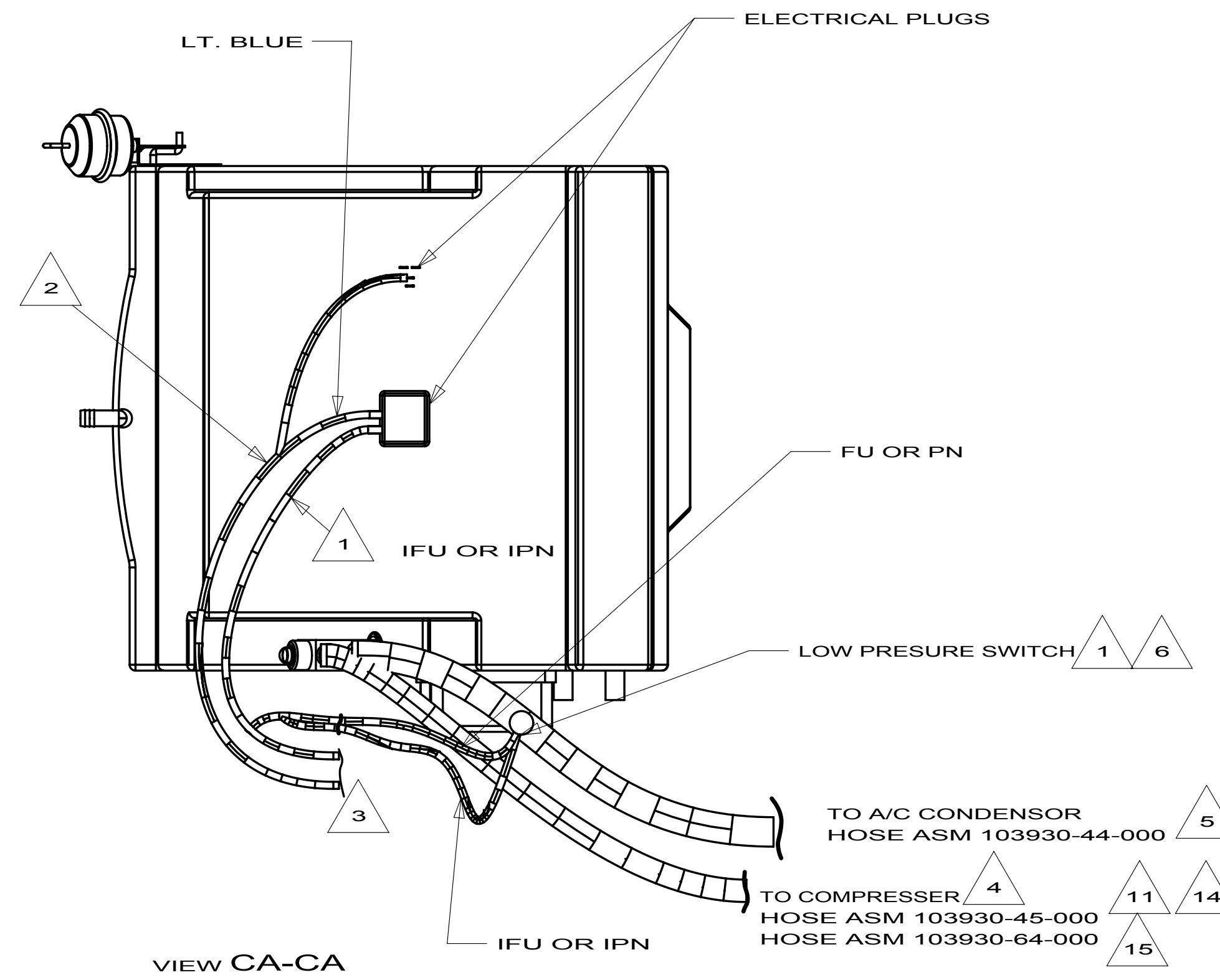


FORD F53 GAS ENGINE D-SERIES(UP TO 02-02-10) E-SERIES(UP TO 01-20-10) J-SERIES(UP TO 01-24-10) SCS

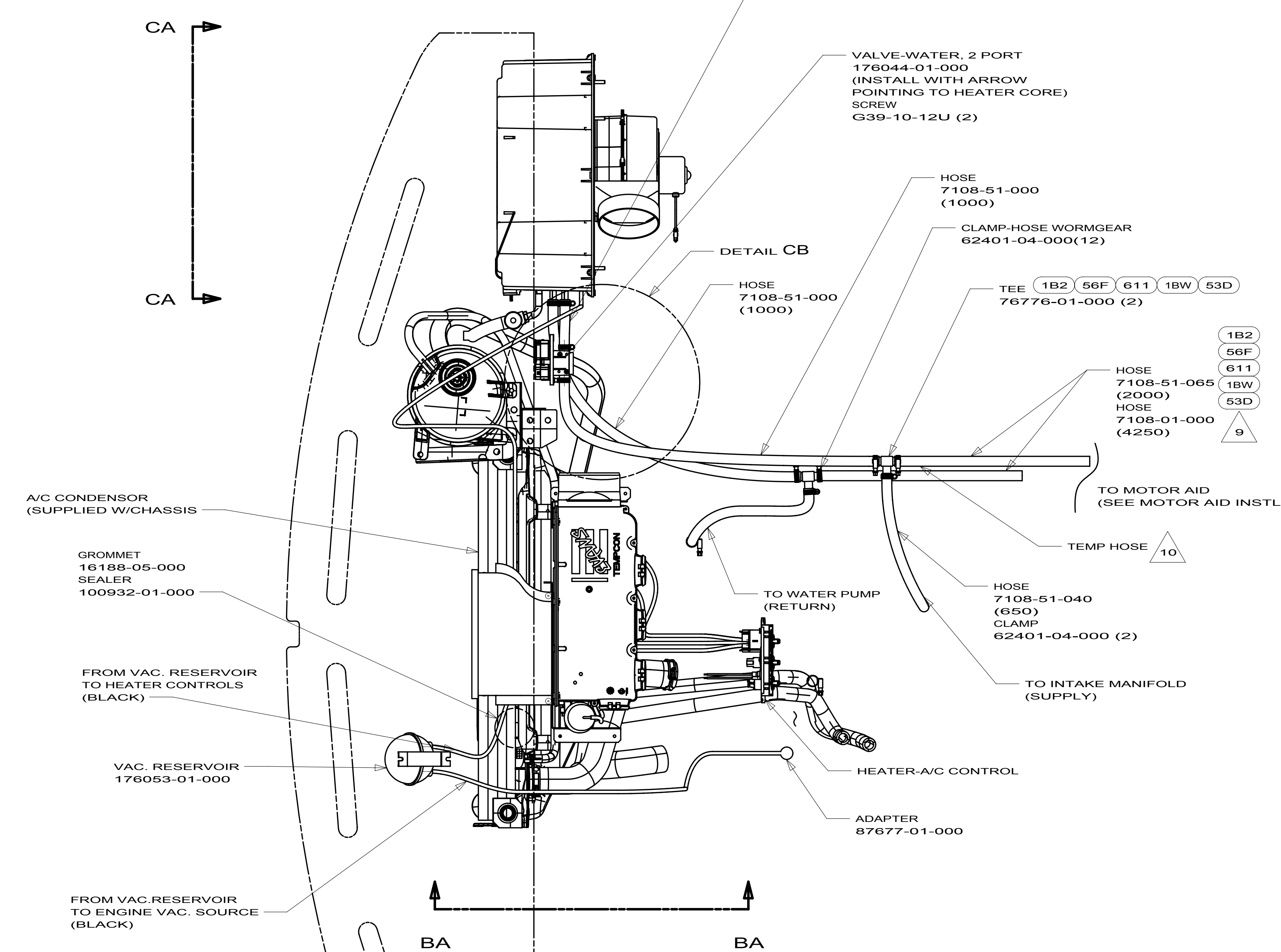
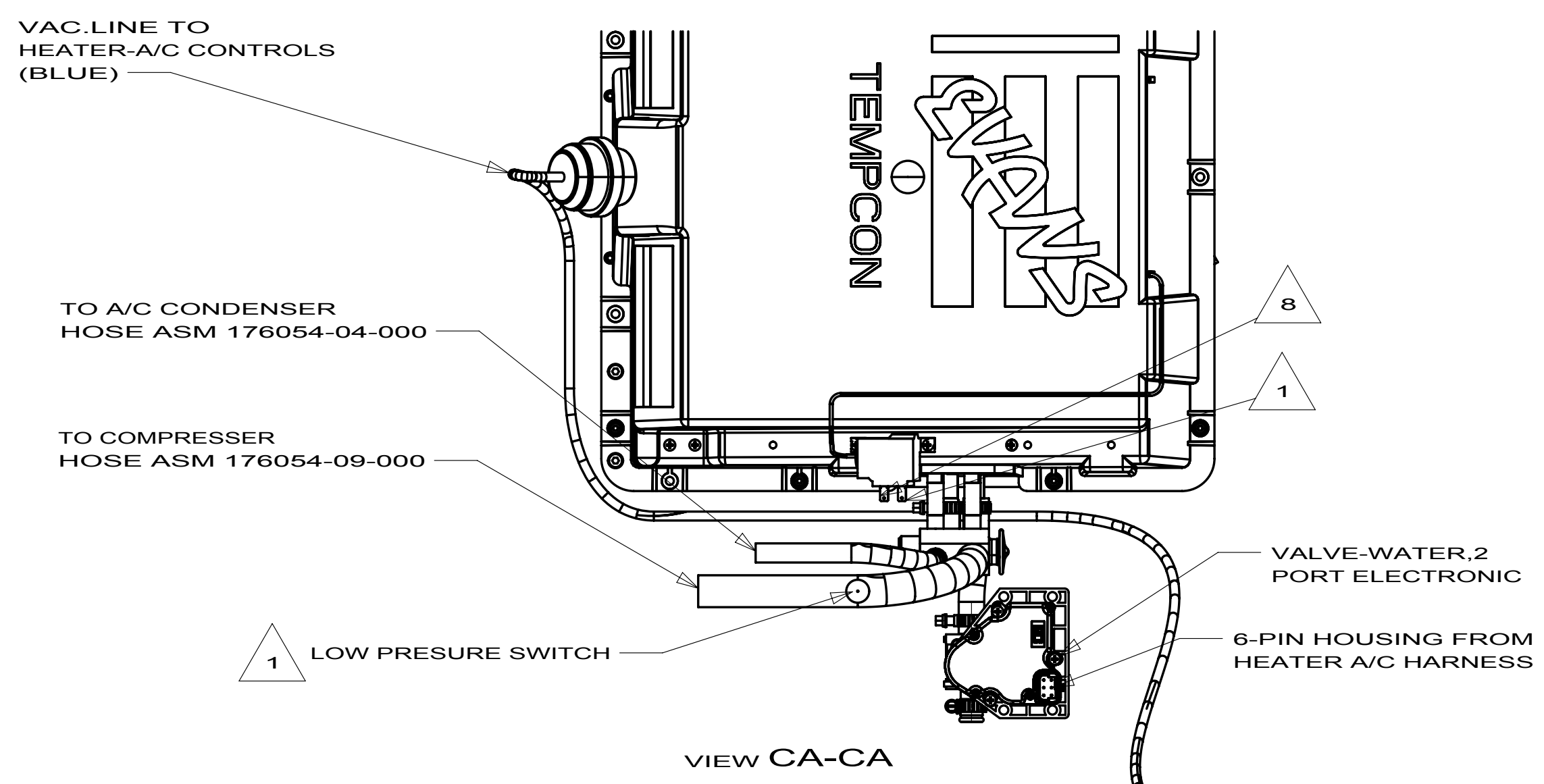
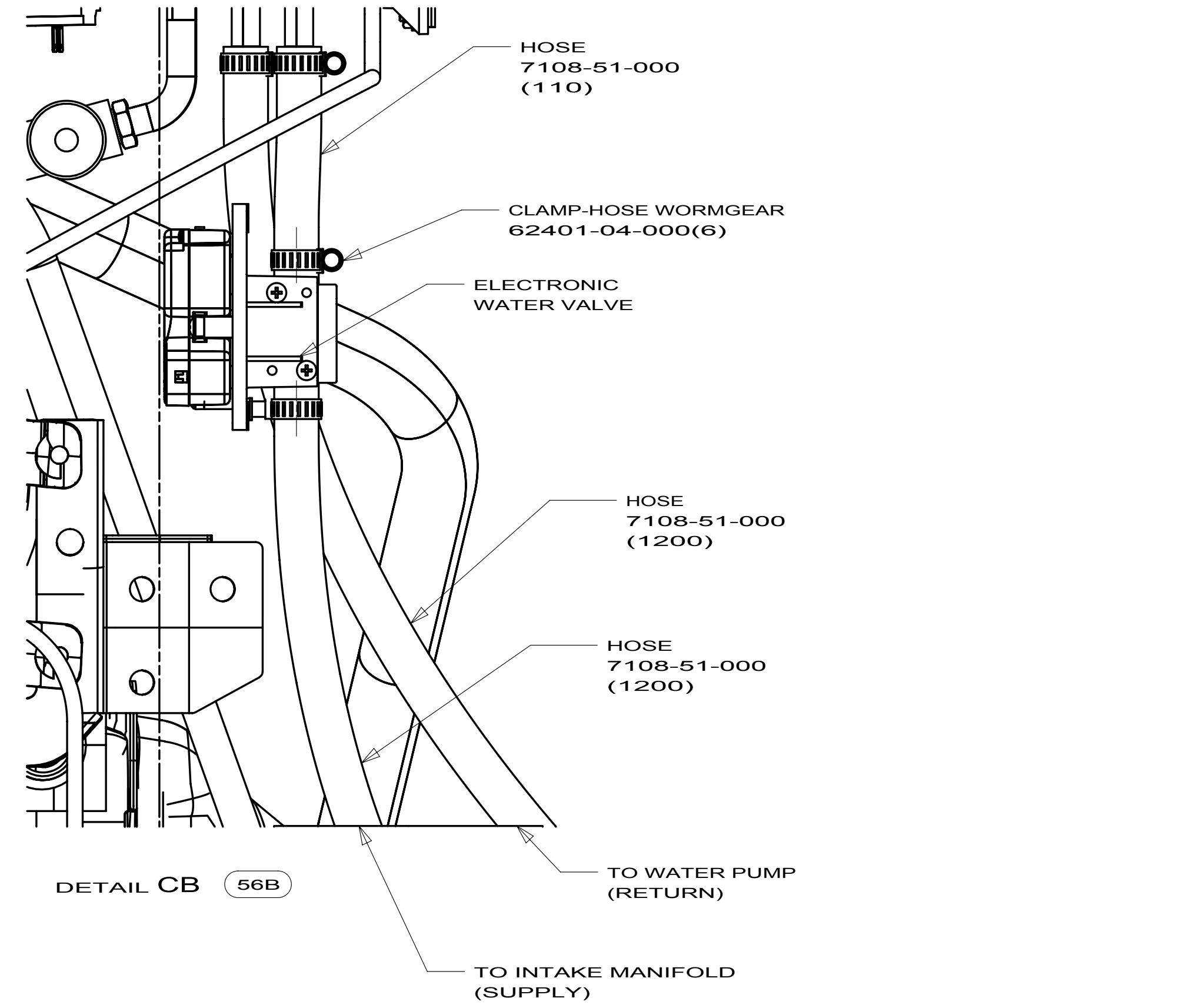


- NOTES:
- 13. TORQUE TO 20 ± 3 IN/LBS.0
 - 12. USE HOSE CUT OFF CHASSIS.
 - 11. CONNECTS TO 155038-01-000 AC SUCTION PIPE SUPPLIED ON CHASSIS.
 - 10. USE ANTI-FREEZE 007316-05-000 (A/R)
 - 9. LUBRICATE ALL O-RINGS WITH REFRIGERANT OIL.
 - 8. LEAVE CAPS ON HOSES UNTIL FINAL CONNECTIONS IS MADE.
 - 7. EVACUATE COMPLETE SYSTEM TO 50 MICRONS AND CHECK FOR LEAKS. CHARGE SYSTEM WITH 32 OZ ± 1.8 OZ OF 3122-03-000 R134A FREON.
 - 6. FORD SUPPLIED
 - 5. TORQUE TO 11-13 FT/LBS
 - 4. TORQUE TO 28-33 FT/LBS
 - 3. THROUGH FIREWALL
 - 2. FROM HEATER-A/C HARNESS
 - 1. FROM WIRE ASM-IP. MAIN

- 16. D37L ONLY
- 15. 2007 FORD.
- 14. PRIOR TO 007 FORD.

- 53D WTR HTR-6GAL/ELE/LP/MOTOR AID
- 1BW WTR HTR-10GL/16OUTPUT/MTR AID
- 1B2 WTR HTR-10GAL/ELEC/LP/MTR AID
- 611 WTR HTR-AUX AUTO/MOTOR AID
- 56F HEATER-AUXILIARY AUTOMOTIVE
- 56B HEATER-AUXILIARY AUTO W/O

HEATER-A/C INSTL, CHASSIS
2A 169851

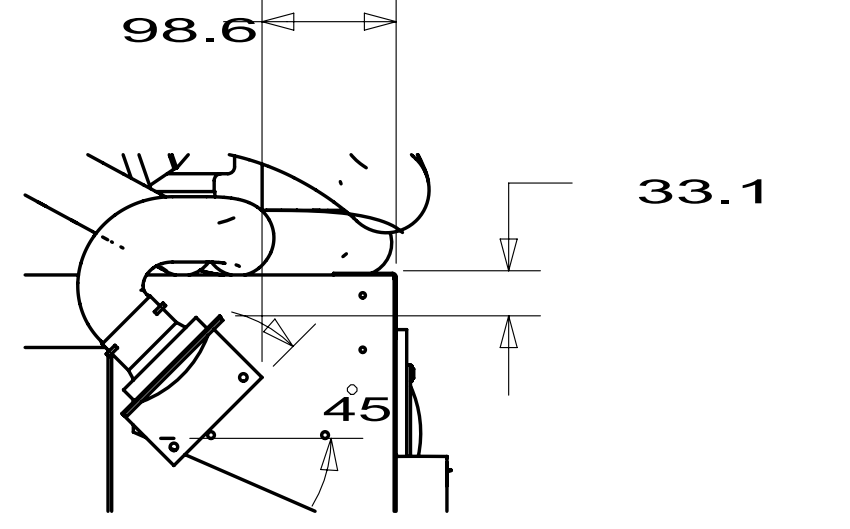


**FORD F53
GAS ENGINE
E-SERIES(AFTER 01-21-10)
D-SERIES(AFTER 02-03-10)
J-SERIES(AFTER 01-25-10)
EVANS**

10. USE HOSE CUT OFF CHASSIS.
9. D37L ONLY.
8. BLUE WIRE FROM HEATER-A/C HARNESS.
7. WHEN MOTOR AID TUBE CONTACTS ANY CHASSIS COMPONENT THE SHALL BE PROTECTED BY CONDUIT 41953-02-000
6. USE ANTIFREEZE 7316-03-000 (A/R)
5. EVACUATE COMPLETE SYSTEM TO 50 MICRONS AND CHARGE SYSTEM WITH R134A REFRIGERANT P/N 3122-03-000. SEE ENGINEERING SPECIFICATION ES0083 FOR REFRIGERANT CHARGE AND REFRIGERANT LINE TORQUE VALUES.
4. LUBRICATE ALL O-RINGS WITH REFRIGERANT OIL.
3. LEAVE CAPS ON HOSES UNTIL FINAL CONNECTION IS MADE
2. APPLY GIMP 113452-02-000 OVER ALL SHARP EDGES THAT MAY CROSS HOSES.
1. FROM WIRE ASM-IP.MAIN
- NOTES:

- 53D WTR HTR-6GAL/ELE/LP/MOTOR AID
- 1BW WTR HTR-10GL/16OUTPUT/MTR AID
- 1B2 WTR HTR-10GAL/ELEC/LP/MTR AID
- 611 WTR HTR-AUX AUTO/MOTOR AID
- 56F HEATER-AUXILIARY AUTOMOTIVE
- 56B HEATER-AUXILIARY AUTO W/O

FIRST USED	10 FORD F53	
TITLE:	DO NOT SCALE DRAWING	
TITLE:	HEATER-A/C INSTL, CHASSIS	
SHEET 2B	PART NO 169851	REV

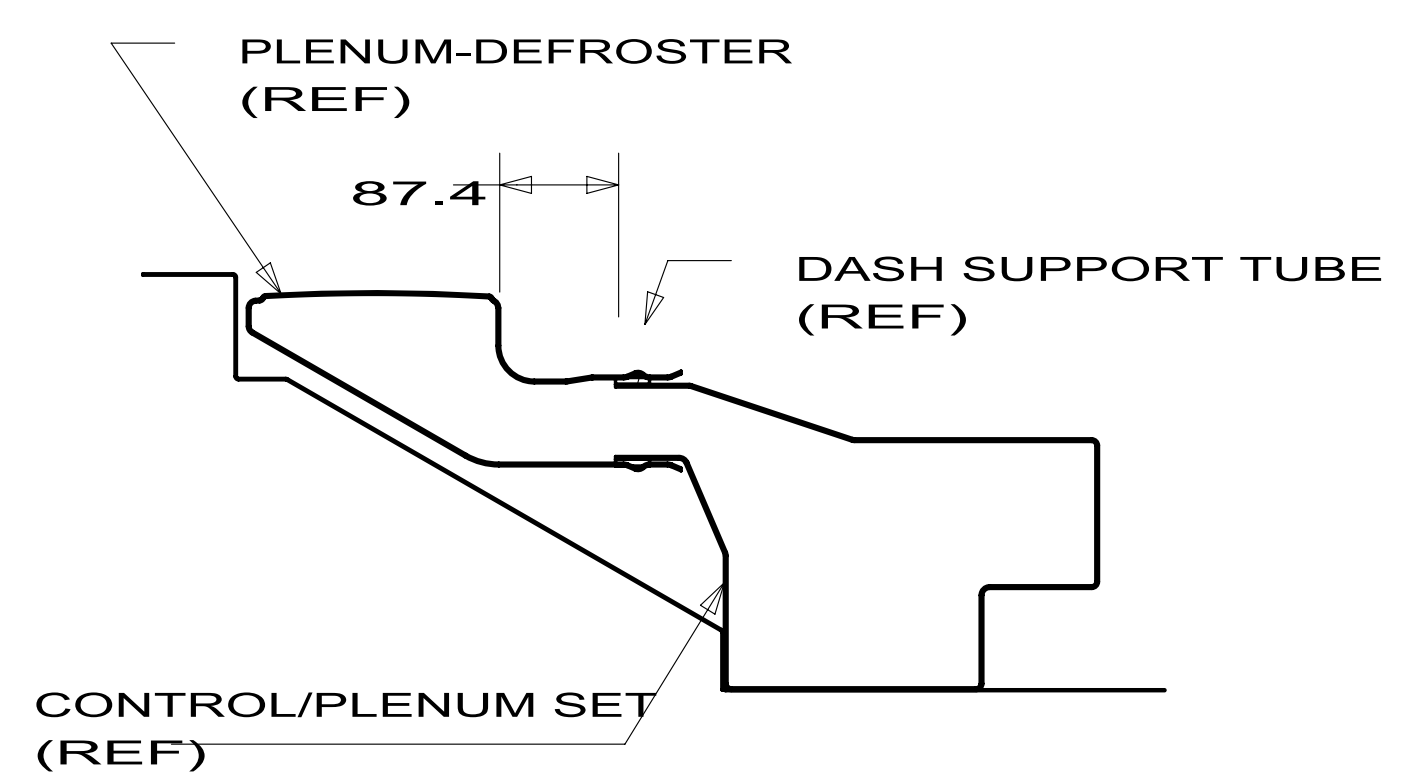


SECTION AB-AB

E-SERIES UP TO 01-20-10 SCS

VENT-DEFROSTER
135265-02-CHT (4)
GASKET
77075-01-000 (4)
(INSTALL GASKET WITH
WIDE END TOWARD CENTER)
SCREW
G55-08-16U (8)
(SCREW THRU GASKET)

PLENUM-DEFROSTER
103017-03-000
SCREW
G39-08-08B (3)
(6 PLACES)



SECTION AA-AA

VENT
146504-01-CHT (2)

SCREW
G55-08-12B (2)
(TRANSITION TO
EVAP,HEATER ASM)

PLENUM-TRANSITION
103016-03-000

HOSE
7281-01-000
(1300)
SCREW
G71-08-08T (4)

SCREW
G55-08-12B (3)
(TRANSITION TO
CONTROL/PLENUM SET)

HOSE
7281-01-000
(400)
SCREW
G71-08-08T (4)

HOSE
7281-01-000
(700)
SCREW
G71-08-08T (4)

CONTROL/PLENUM SET
103930-49-000

HOSE
7281-01-000
(1200)
SCREW
G71-08-08T (4)

BRACKET
136157-03-CHT
SCREW
G11-08-12D (2)
OUTLET-DEFROSTER,W/SWIVEL
157225-01-CHT
SCREW
G71-08-08T (2)

BRACE
156732-01-CHT (2)
SCREW
G67-08-12B (4)

NUT
D39-04-00B (5)

HOSE
7076-01-000
(1300)
SCREW
G71-08-08T (4)

EVAP,HEATER ASM
103930-55-000

COVER ASM-HEATER
95757-08-XXX
OUTLET-DEFROSTER
157225-01-CHT
SCREW
G39-08-16U (4)

HOSE
7076-01-000
(900)
SCREW
G71-08-08T (4)

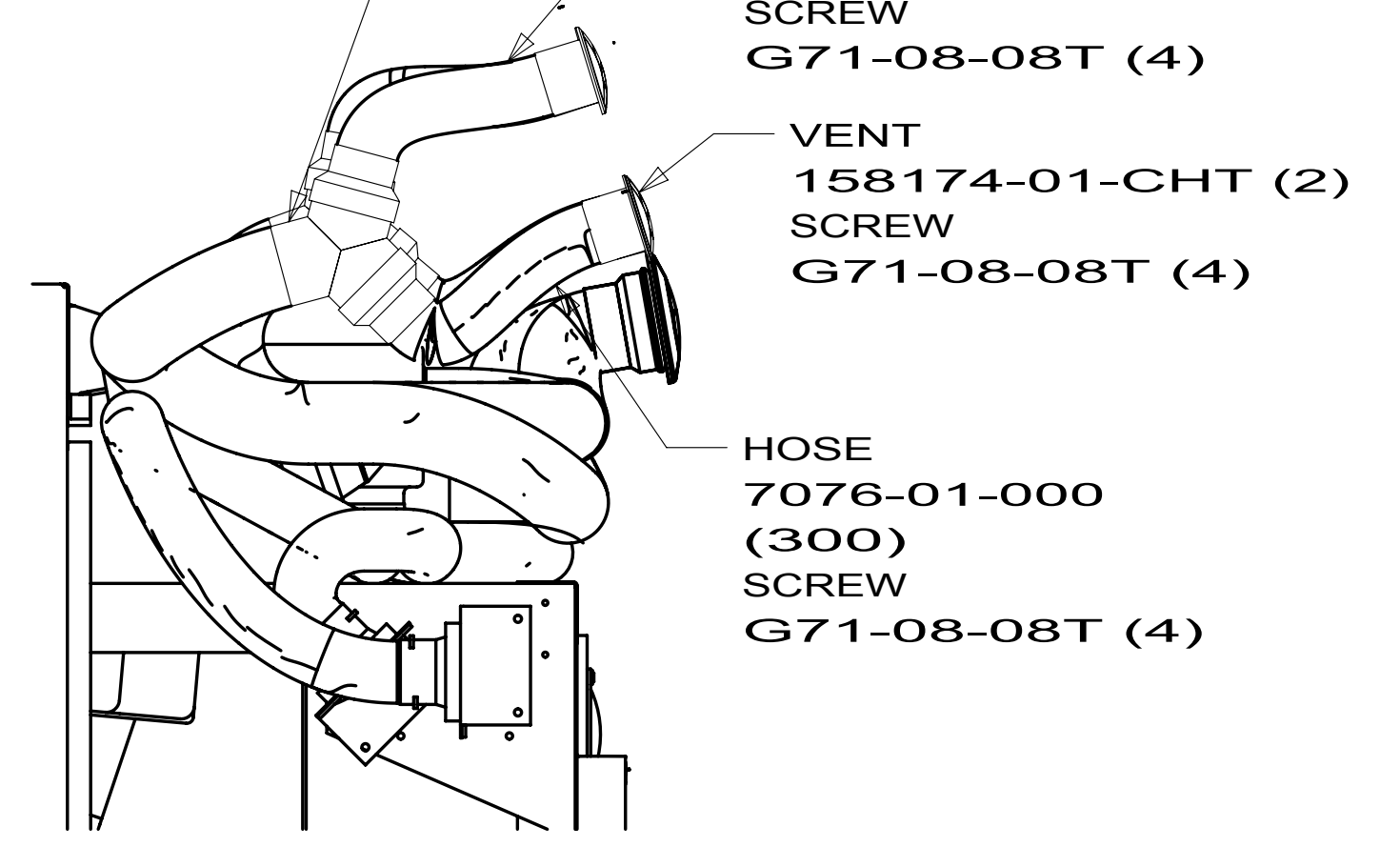
BRACKET
136157-03-CHT
SCREW
G11-08-12D (2)
OUTLET-DEFROSTER,W/SWIVEL
157225-01-CHT
SCREW
G71-08-08T (2)

CONNECTOR-WYE 2.5
98342-01-000
ADAPTER-HOSE 2.5 TO 2.0
98342-02-000 (2)

HOSE
7076-01-000
(300)
SCREW
G71-08-08T (4)

VENT
158174-01-CHT (2)
SCREW
G71-08-08T (4)

HOSE
7076-01-000
(300)
SCREW
G71-08-08T (4)



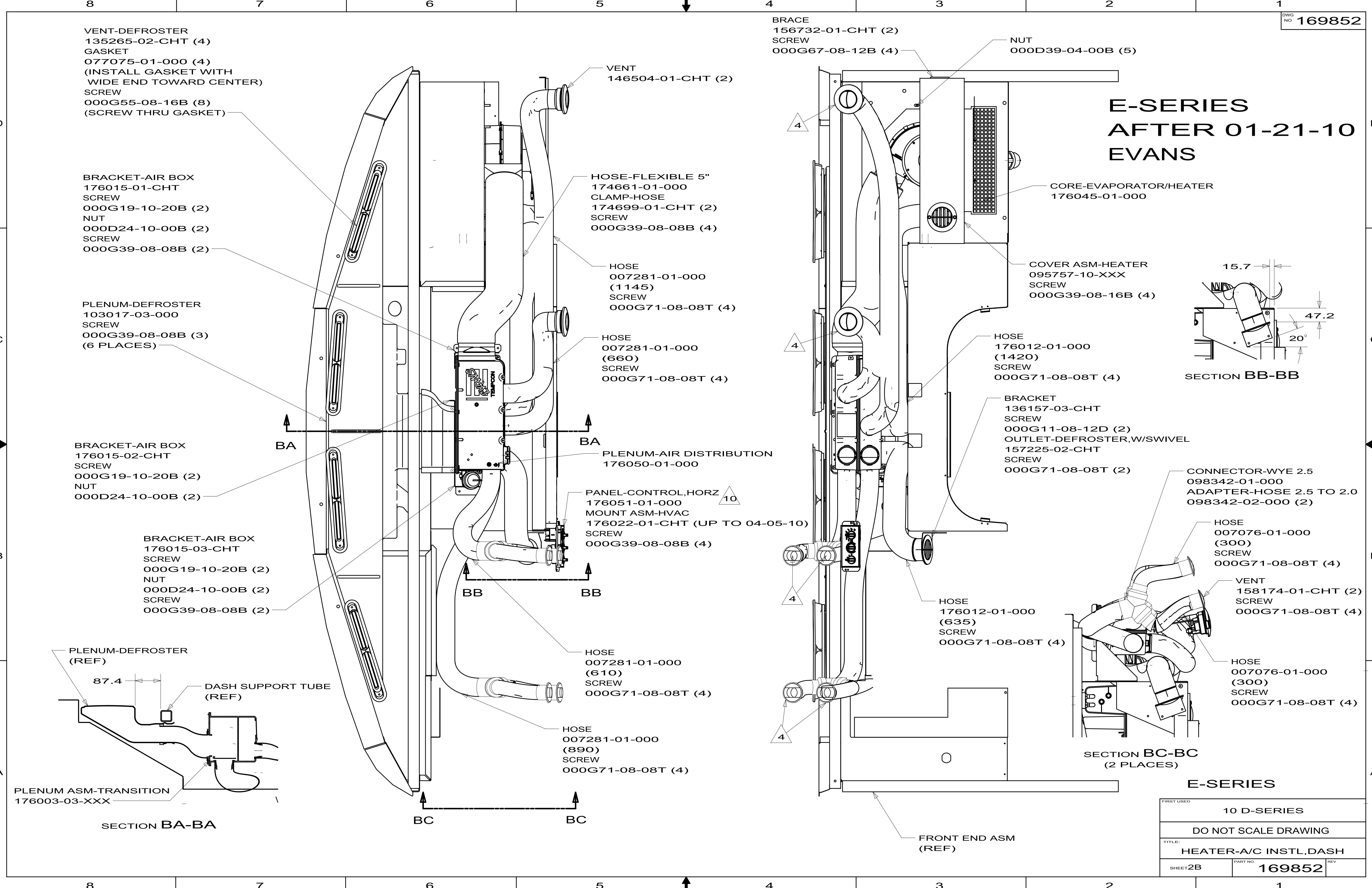
SECTION AC-AC
(2 PLACES)

HOSE
7076-01-000
(1500)
SCREW
G71-08-08T (4)

FRONT END ASM
(REF)

FIRST USED	10 D-SERIES
DO NOT SCALE DRAWING	
TITLE: HEATER-A/C INSTL,DASH	
SHEET 2A	PART NO 169852
REV	

E-SERIES AFTER 01-21-10 EVANS



VENT-DEFROSTER
135265-02-CHT (4)
GASKET
077075-01-000 (4)
(INSTALL GASKET WITH
WIDE END TOWARD CENTER)
SCREW
000G55-08-16B (8)
(SCREW THRU GASKET)

BRACKET-AIR BOX
176015-01-CHT
SCREW
000G19-10-20B (2)
NUT
000D24-10-00B (2)
SCREW
000G39-08-08B (2)

PLENUM-DEFROSTER
103017-03-000
SCREW
000G39-08-08B (3)
(6 PLACES)

BRACKET-AIR BOX
176015-02-CHT
SCREW
000G19-10-20B (2)
NUT
000D24-10-00B (2)

BRACKET-AIR BOX
176015-03-CHT
SCREW
000G19-10-20B (2)
NUT
000D24-10-00B (2)
SCREW
000G39-08-08B (2)

PLENUM-DEFROSTER
(REF)
87.4
DASH SUPPORT TUBE
(REF)

PLENUM ASM-TRANSITION
176003-03-XXX

SECTION BA-BA

VENT
146504-01-CHT (2)

HOSE-FLEXIBLE 5"
174661-01-000
CLAMP-HOSE
174699-01-CHT (2)
SCREW
000G39-08-08B (4)

HOSE
007281-01-000
(1145)
SCREW
000G71-08-08T (4)

HOSE
007281-01-000
(660)
SCREW
000G71-08-08T (4)

PLENUM-AIR DISTRIBUTION
176050-01-000

PANEL-CONTROL,HORZ
176051-01-000
MOUNT ASM-HVAC
176022-01-CHT (UP TO 04-05-10)
SCREW
000G39-08-08B (4)

HOSE
007281-01-000
(610)
SCREW
000G71-08-08T (4)

HOSE
007281-01-000
(890)
SCREW
000G71-08-08T (4)

SECTION BB-BB

BRACE
156732-01-CHT (2)
SCREW
000G67-08-12B (4)

NUT
000D39-04-00B (5)

CORE-EVAPORATOR/HEATER
176045-01-000

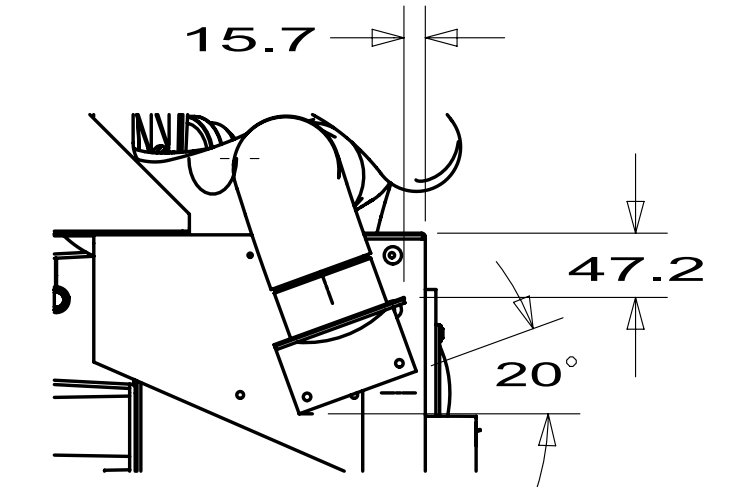
COVER ASM-HEATER
095757-10-XXX
SCREW
000G39-08-16B (4)

HOSE
176012-01-000
(1420)
SCREW
000G71-08-08T (4)

BRACKET
136157-03-CHT
SCREW
000G11-08-12D (2)
OUTLET-DEFROSTER,W/SWIVEL
157225-02-CHT
SCREW
000G71-08-08T (2)

HOSE
176012-01-000
(635)
SCREW
000G71-08-08T (4)

FRONT END ASM
(REF)



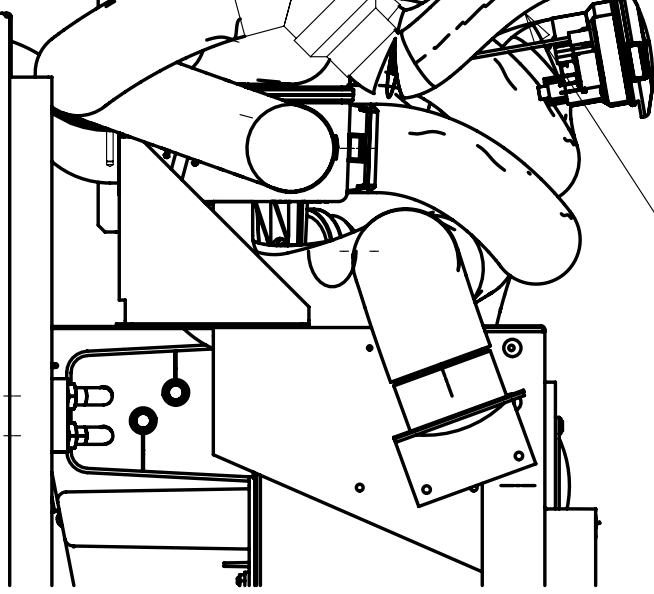
SECTION BB-BB

CONNECTOR-WYE 2.5
098342-01-000
ADAPTER-HOSE 2.5 TO 2.0
098342-02-000 (2)

HOSE
007076-01-000
(300)
SCREW
000G71-08-08T (4)

VENT
158174-01-CHT (2)
SCREW
000G71-08-08T (4)

HOSE
007076-01-000
(300)
SCREW
000G71-08-08T (4)



SECTION BC-BC
(2 PLACES)

E-SERIES

FIRST USED	10 D-SERIES	
DO NOT SCALE DRAWING		
TITLE:	HEATER-A/C INSTL,DASH	
SHEET:2B	PART NO	169852
	REV	

072342-17-000

KEY	PART NUMBER	U/M	DESCRIPTION
	072342-12-701	EA	HOSE ASM #8 CONDENSER/COMP
	113245-01-707	EA	O'RING #8

VENDOR NO.
085-0142
045-0126

072342-26-000

KEY	PART NUMBER	U/M	DESCRIPTION
	072342-26-700	EA	SWITCH-BINARY W/PACKARD CONN
	072342-26-701	EA	HOSE ASM. - #6 DRIER/EVAP
	103930-01-716	EA	SWITCH-PRESSURE/COND. FAN
	113245-01-711	EA	O'RING #6

VENDOR NO.
032-00384
085-00623
032-0036
045-0129

072342-27-000

KEY	PART NUMBER	U/M	DESCRIPTION
	072342-27-700	EA	HOSE - #6 DRIER/EVAPORATOR
	103930-01-716	EA	SWITCH-PRESSURE/COND. FAN
	103930-12-708	EA	SWITCH-BINARY-HI/LOW CUTOUT
	103930-12-709	EA	FITTING-QUICK CONNECT
	110279-02-702	EA	O'RING #12
	113245-01-711	EA	O'RING #6

VENDOR NO.
085-00622
032-0036
032-00048
050-0120
045-0125
045-0129

KEY	PART NUMBER	U/M	DESCRIPTION
	103930-29-701	EA	O'RING F/LOW PRESSURE SWITCH
	103930-44-700	EA	HOSE ASSEMBLY #6
	113245-01-711	EA	O'RING #6

103930-44-000
VENDOR NO
045-0483
085-0462
045-0129

KEY	PART NUMBER	U/M	DESCRIPTION
	103930-17-702	EA	O'RING #10
	103930-45-700	EA	HOSE - #10 EVAP/COMP - 3'

103930-45-000
VENDOR NO.
045-0127
085-0463

KEY	PART NUMBER	U/M	DESCRIPTION
	103930-17-702	EA	O'RING #10
	103930-29-701	EA	O'RING F/LOW PRESSURE SWITCH
	103930-46-700	EA	HOSE - #10 EVAP/COMP - 4.3'

103930-46-000
VENDOR NO
045-0127
045-0483
085-0486

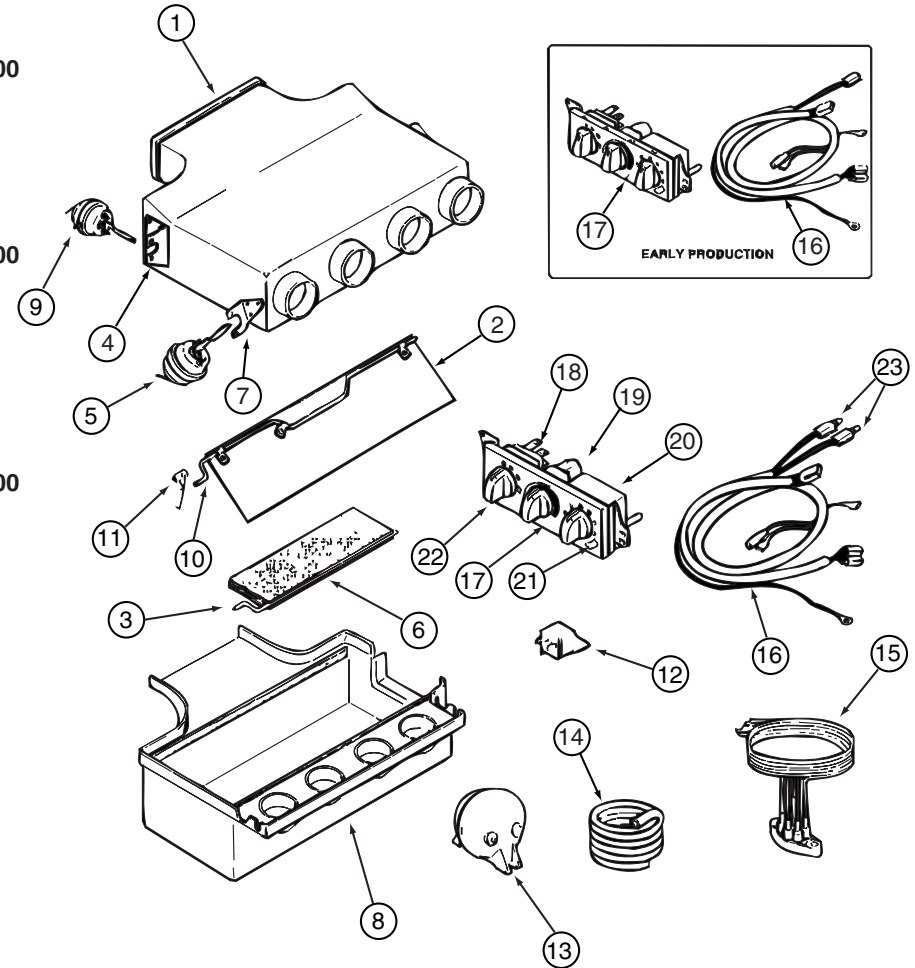
KEY	PART NUMBER	U/M	DESCRIPTION
	103930-47-700	EA	HOSE - #6-EVAP/DRIER - 2.2'
	113245-01-710	EA	O'RING, #12

103930-47-000
VENDOR NO
085-0485
045-0128

KEY	PART NUMBER	U/M	DESCRIPTION
1	103930-39-705	EA	PLENUM - TOP
2	103930-04-700	EA	DOOR - DEFROSTER-A/C
3	103930-39-700	EA	ROD - DOOR - AC/HEAT
5	103930-02-708	EA	MOTOR-VACUUM SERVO, A/C
6	103930-39-706	EA	PLATE - DOOR - A/C
8	103930-39-707	EA	PLENUM - BOTTOM
9	103930-33-701	EA	MOTOR - VACUUM, 3 STAGE
10	103930-39-701	EA	ROD - DOOR - AC/DEFROST
11	103930-39-704	EA	SPRING
12	103930-02-707	EA	RELAY-BOSCH W/RESISTER
13	103930-02-710	EA	CANISTER-VACUUM
15	103930-33-703	EA	VACUUM HARNESS
16	103930-49-700	EA	HARNESS - WIRE
16	103930-49-701	EA	HARNESS - WIRE W/BULBS
17	103930-49-702	EA	CONTROL PANEL-RECESSED FACE
17	103930-49-703	EA	CONTROL PANEL ASM. - DRIVER
18	103930-49-704	EA	SWITCH - BLOWER
19	103930-49-705	EA	POTENTIOMETER
20	103930-49-706	EA	SWITCH - VACUUM
21	103930-49-707	EA	DECAL CONTROL PANEL-N/RECESS
22	103930-49-708	EA	KNOB - BLOWER - NONRECESSED
23	103930-33-705	EA	LIGHT BULBS

103930-49-000
VENDOR NO.
060-0482
071-0149
073-0067
030-0025
071-0623
060-0483
030-0105
073-0069
022-0119
031-0001
054-0002
036-0466
036-0556
036-0557
032-0118
083-0223
032-0332
032-0182
032-0185
058-0144
062-0617
035-0030

CONTACT WINNEBAGO PART SALES FOR UNLISTED COMPONENT(S)

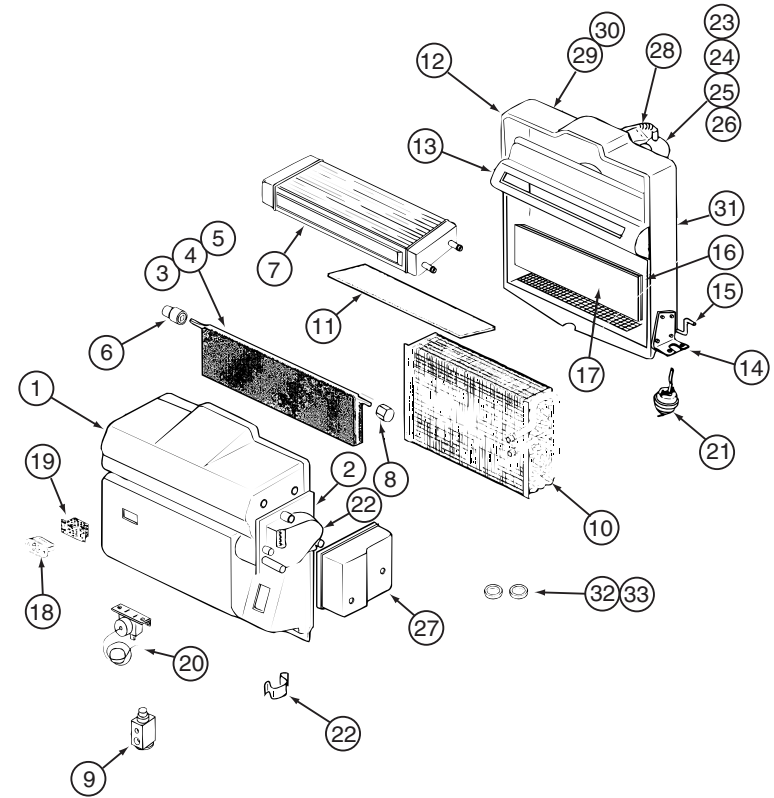


KEY	PART NUMBER	U/M	DESCRIPTION
	103930-17-702	EA	O'RING #10
	103930-51-700	EA	HOSE - #12 EVAP/COMP - 41.5'

103930-51-000
VENDOR NO.
045-0127
085-0490

KEY	PART NUMBER	U/M	DESCRIPTION	VENDOR NO.
1	103930-55-701	EA	CASE - FRONT	062-0658
2	103930-30-701	EA	PLATE - MOTOR MOUNT	062-0544
3	103930-55-705	EA	DOOR - BLEND AIR	071-0892
6	103930-30-702	EA	BUSHING/DRIVE (BLEND DOOR)	062-0168
7	103930-55-706	EA	CORE - HEATER - W/GASKET	084-0271
8	103930-30-709	EA	COUPLING - BLEND DOOR SHAFT	062-0634
9	103930-20-700	EA	VALVE-EXPANSION-BLOCK, 2 TON	034-0032
10	103930-55-700	EA	CORE-EVAPORATOR	041-00168
12	103930-55-702	EA	CASE-REAR	062-0657
14	103930-01-708	EA	BRACKET-VACUUM MOTOR	070-0113
15	103930-20-704	EA	ROD-DOOR-RECIRCULATING	073-0018
16	103930-55-707	EA	DOOR - RECIRCULATION	071-0891
18	103930-01-710	EA	RESISTOR-FUSED, A/C 4 TERM	035-0006
20	103930-01-711	EA	THERMOSTAT	033-0003
21	103930-02-708	EA	MOTOR-VACUUM SERVO, A/C	030-0025
22	103930-30-703	EA	MOTOR - SERVO	030-0104
23	103930-20-707	EA	HOUSING-BLOWER	062-0145
24	103930-55-703	EA	MOTOR - BLOWER W/O PIGTAIL	030-0137
25	103930-01-717	EA	WHEEL-BLOWER, CLOCKWISE	062-0010
26	103930-20-708	EA	CLIP-MOTOR SHAFT	022-0001
27	103930-30-704	EA	COVER - SERVO	062-0545
32	113245-01-707	EA	O'RING #8	045-0126
33	103930-17-702	EA	O'RING #10	045-0127
	103930-55-704	EA	CORE-HEATER	042-0059
	110279-01-703	EA	HOSE-VENT F/BLOWER MOTOR	051-0034

CONTACT WINNEBAGO PART SALES FOR UNLISTED COMPONENT(S)



103930-55-000

VENDOR NO.

103930-59-000

KEY	PART NUMBER	U/M	DESCRIPTION
	103930-17-702	EA	O'RING #10
	103930-59-700	EA	HOSE - A/C-#12EVAP/COMP 80"
	113245-01-710	EA	O'RING, #12

VENDOR NO
045-0127
085-0574
045-0128

KEY	PART NUMBER	U/M	DESCRIPTION
	103930-02-707	EA	RELAY-BOSCH W/RESISTER
	103930-02-708	EA	MOTOR-VACUUM SERVO, A/C
	103930-02-710	EA	CANISTER-VACUUM
	103930-33-701	EA	MOTOR - VACUUM, 3 STAGE
	103930-33-703	EA	VACUUM HARNESS
	103930-49-701	EA	HARNESS - WIRE W/BULBS
	103930-49-704	EA	SWITCH - BLOWER
	103930-49-705	EA	POTENTIOMETER
	103930-49-706	EA	SWITCH - VACUUM
	103930-49-707	EA	DECAL CONTROL PANEL-N/RECESS
	103930-61-700	EA	PLENUM - TOP CASE
	103930-61-701	EA	PLENUM - LOWER CASE
	103930-61-702	EA	DOOR - HEAT/VENT
	103930-61-703	EA	ROD - DEF/HEAT DOOR
	103930-61-704	EA	DOOR - DEF/HEAT
	103930-61-705	EA	HOUSING ONLY - CONTROL PANEL
	103930-61-706	EA	KNOB - CONTROL
	103930-65-702	EA	CONTROL PANEL W/SWITCHES

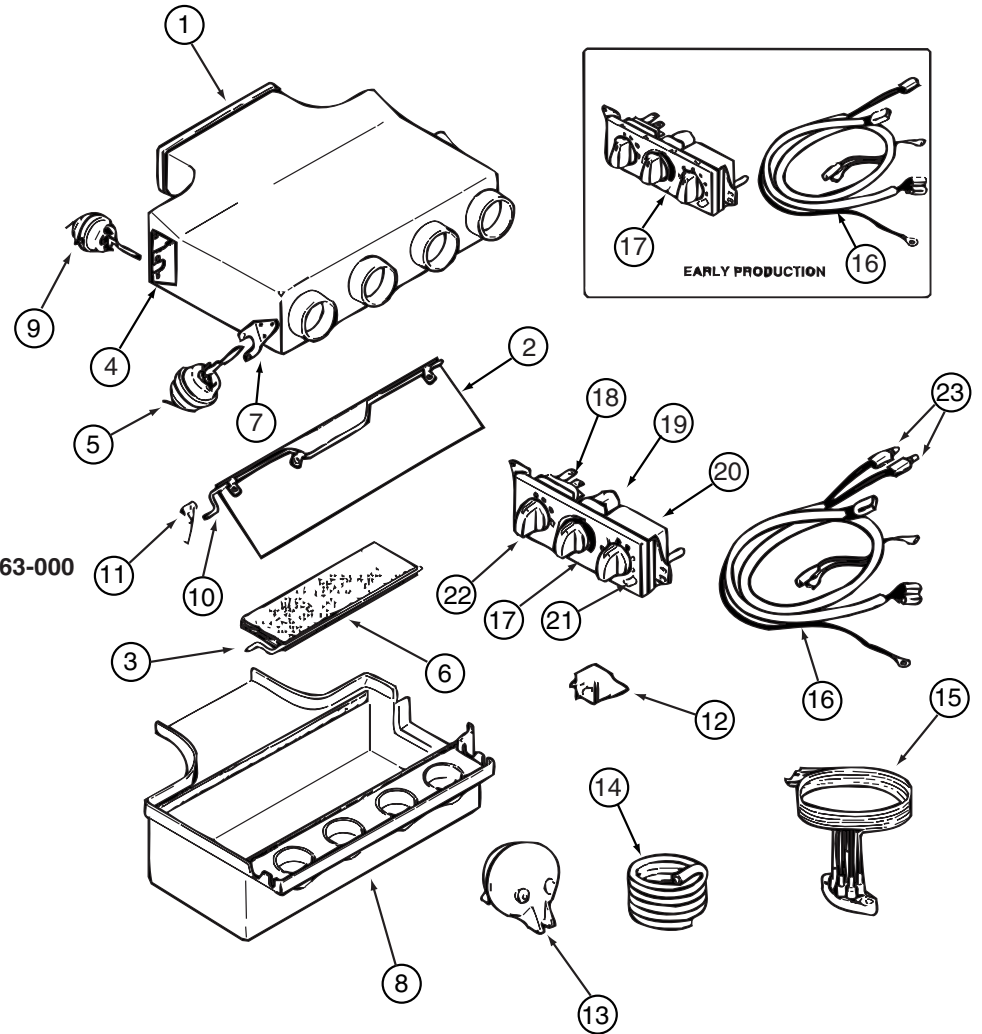
KEY	PART NUMBER	U/M	DESCRIPTION
1	103930-39-705	EA	PLENUM - TOP
2	103930-04-700	EA	DOOR - DEFROSTER-A/C
3	103930-39-700	EA	ROD - DOOR - AC/HEAT
5	103930-02-708	EA	MOTOR-VACUUM SERVO, A/C
6	103930-39-706	EA	PLATE - DOOR - A/C
8	103930-39-707	EA	PLENUM - BOTTOM
9	103930-33-701	EA	MOTOR - VACUUM, 3 STAGE
10	103930-39-701	EA	ROD - DOOR - AC/DEFROST
11	103930-39-704	EA	SPRING
12	103930-02-707	EA	RELAY-BOSCH W/RESISTER
13	103930-02-710	EA	CANISTER-VACUUM
15	103930-33-703	EA	VACUUM HARNESS
18	103930-49-704	EA	SWITCH - BLOWER
19	103930-49-705	EA	POTENTIOMETER
20	103930-49-706	EA	SWITCH - VACUUM
21	103930-63-700	EA	DECAL CONTROL PANEL-N/RECESS
22	103930-49-708	EA	KNOB - BLOWER - NONRECESSED

CONTACT WINNEBAGO PART SALES FOR UNLISTED COMPONENT(S)

103930-61-000

VENDOR NO.

031-0001
030-0025
054-0002
030-0105
036-0466
036-0557
032-0332
032-0182
032-0185
058-0144
060-00787
060-00788
071-01054
073-00086
071-01053
062-00615
062-00723
083-00308



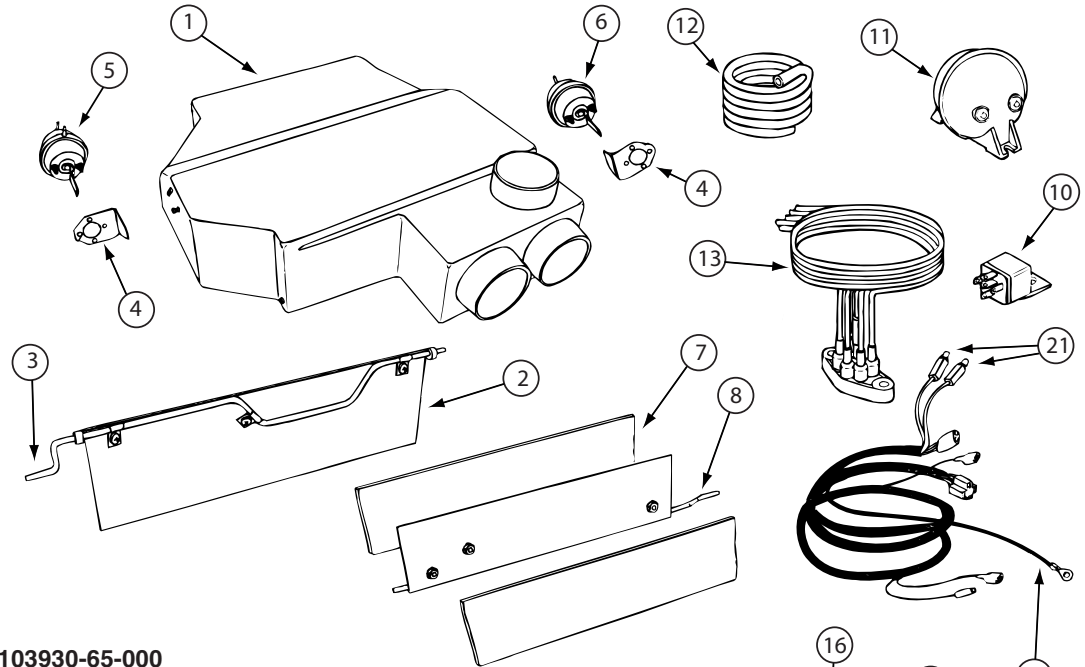
103930-63-000

VENDOR NO.

060-0482
071-0149
073-067
030-0025
071-0623
060-0483
030-0105
073-0069
022-0119
031-0001
054-0002
036-0466
032-0332
032-0182
032-0185
058-00344
062-0620

KEY	PART NUMBER	U/M DESCRIPTION
	103930-17-702	EA O'RING #10
	103930-64-700	EA HOSE - #10 EVAP/COMP

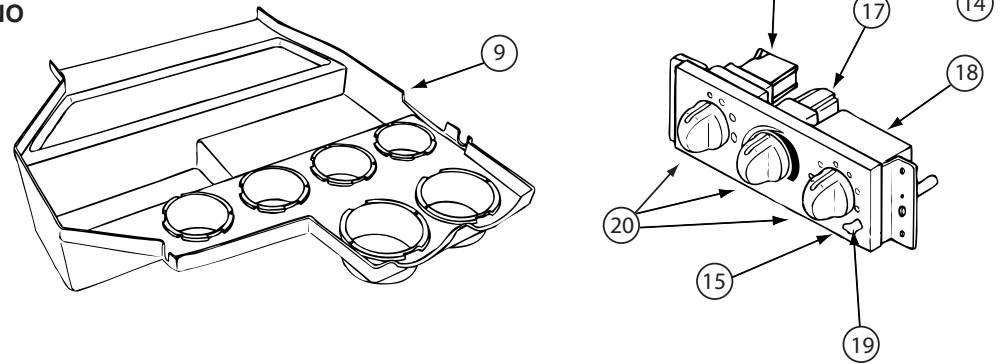
103930-64-000
VENDOR NO
045-0127
085-00636

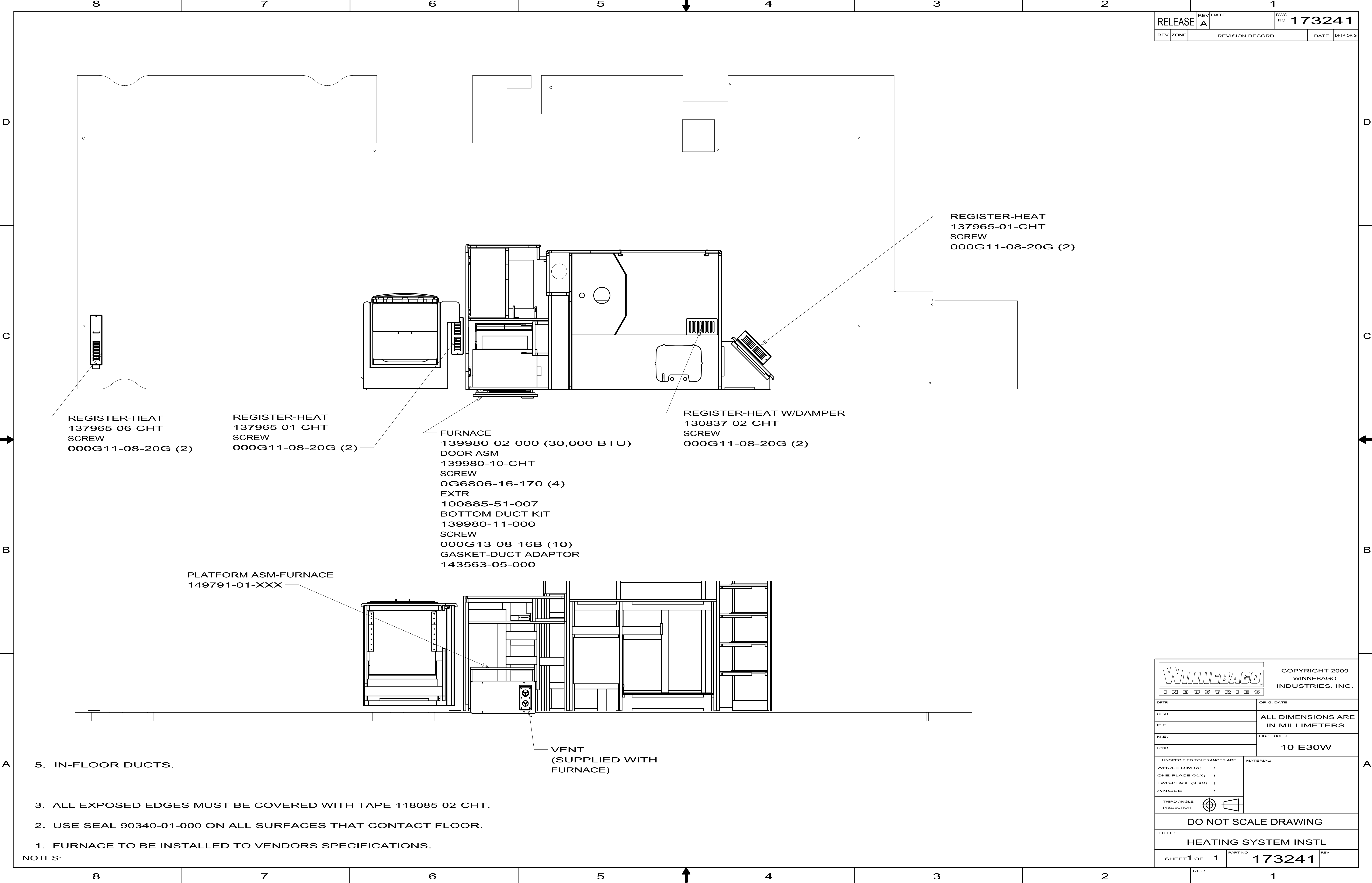


KEY	PART NUMBER	U/M DESCRIPTION
1	103930-65-700	EA PLENUM - TOP
2	103930-58-701	EA DOOR/DIVERTOR - DEFROSTER
3	103930-58-702	EA ROD - DEFROSTER DIVERTOR DR
4	103930-65-703	EA BRACKET-VACUUM MOTOR
5	103930-33-701	EA MOTOR - VACUUM, 3 STAGE
6	103930-02-708	EA MOTOR-VACUUM SERVO, A/C
7	103930-58-703	EA DOOR/DIVERTOR - A/C-HEAT
8	103930-58-704	EA ROD - A/C-HEAT DOOR
9	103930-65-701	EA PLENUM - BOTTOM
10	103930-02-707	EA RELAY-BOSCH W/RESISTER
11	103930-02-710	EA CANISTER-VACUUM
13	103930-33-703	EA VACUUM HARNESS
14	103930-49-701	EA HARNESS - WIRE W/BULBS
16	103930-49-704	EA SWITCH - BLOWER
17	103930-49-705	EA POTENTIOMETER
18	103930-49-706	EA SWITCH - VACUUM
19	103930-49-707	EA DECAL CONTROL PANEL-N/RECESS
20	103930-61-706	EA KNOB - CONTROL

103930-65-000
VENDOR NO

060-00800
071-0929
073-0080
070-00782
030-0105
030-0025
071-0930
073-0079
060-00801
031-0001
054-0002
036-0466
036-0557
032-0332
032-0182
032-0185
058-0144
062-00723





REGISTER-HEAT
137965-06-CHT
SCREW
000G11-08-20G (2)

REGISTER-HEAT
137965-01-CHT
SCREW
000G11-08-20G (2)

FURNACE
139980-02-000 (30,000 BTU)
DOOR ASM
139980-10-CHT
SCREW
0G6806-16-170 (4)
EXTR
100885-51-007
BOTTOM DUCT KIT
139980-11-000
SCREW
000G13-08-16B (10)
GASKET-DUCT ADAPTOR
143563-05-000

REGISTER-HEAT W/DAMPER
130837-02-CHT
SCREW
000G11-08-20G (2)

REGISTER-HEAT
137965-01-CHT
SCREW
000G11-08-20G (2)

PLATFORM ASM-FURNACE
149791-01-XXX

VENT
(SUPPLIED WITH
FURNACE)

5. IN-FLOOR DUCTS.

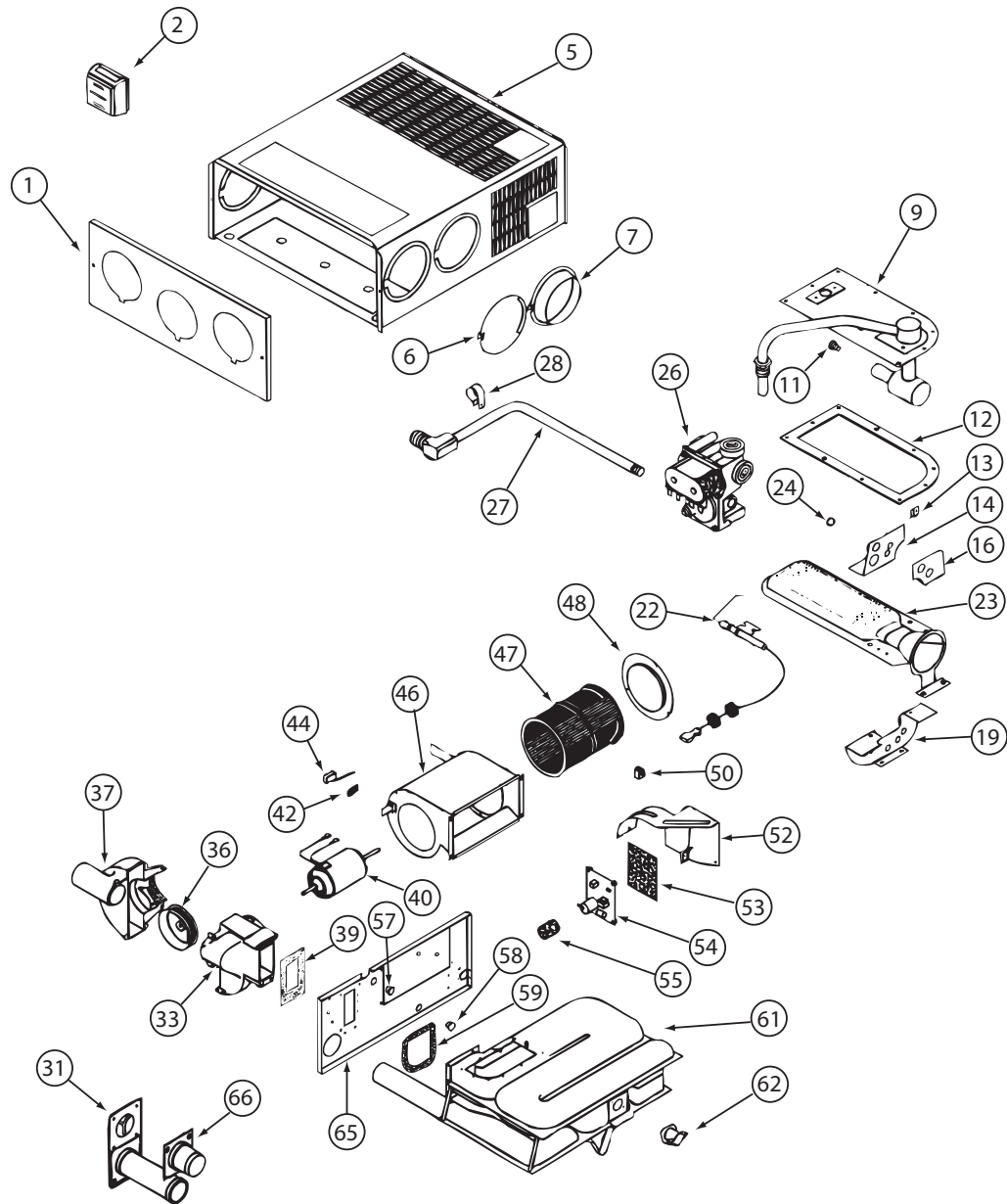
3. ALL EXPOSED EDGES MUST BE COVERED WITH TAPE 118085-02-CHT.

2. USE SEAL 90340-01-000 ON ALL SURFACES THAT CONTACT FLOOR.

1. FURNACE TO BE INSTALLED TO VENDORS SPECIFICATIONS.

NOTES:

WINNEBAGO INDUSTRIES		COPYRIGHT 2009 WINNEBAGO INDUSTRIES, INC.	
DTR	ORIG. DATE	ALL DIMENSIONS ARE IN MILLIMETERS	
CHKR			
P.E.			
M.E.	FIRST USED		
DSNR		10 E30W	
UNSPECIFIED TOLERANCES ARE:		MATERIAL:	
WHOLE DIM (X)	:		
ONE-PLACE (X.X)	:		
TWO-PLACE (X.XX)	:		
ANGLE	:		
THIRD ANGLE PROJECTION			
DO NOT SCALE DRAWING			
TITLE: HEATING SYSTEM INSTL			
SHEET 1 OF 1	PART NO	173241	REV
REF:	1		

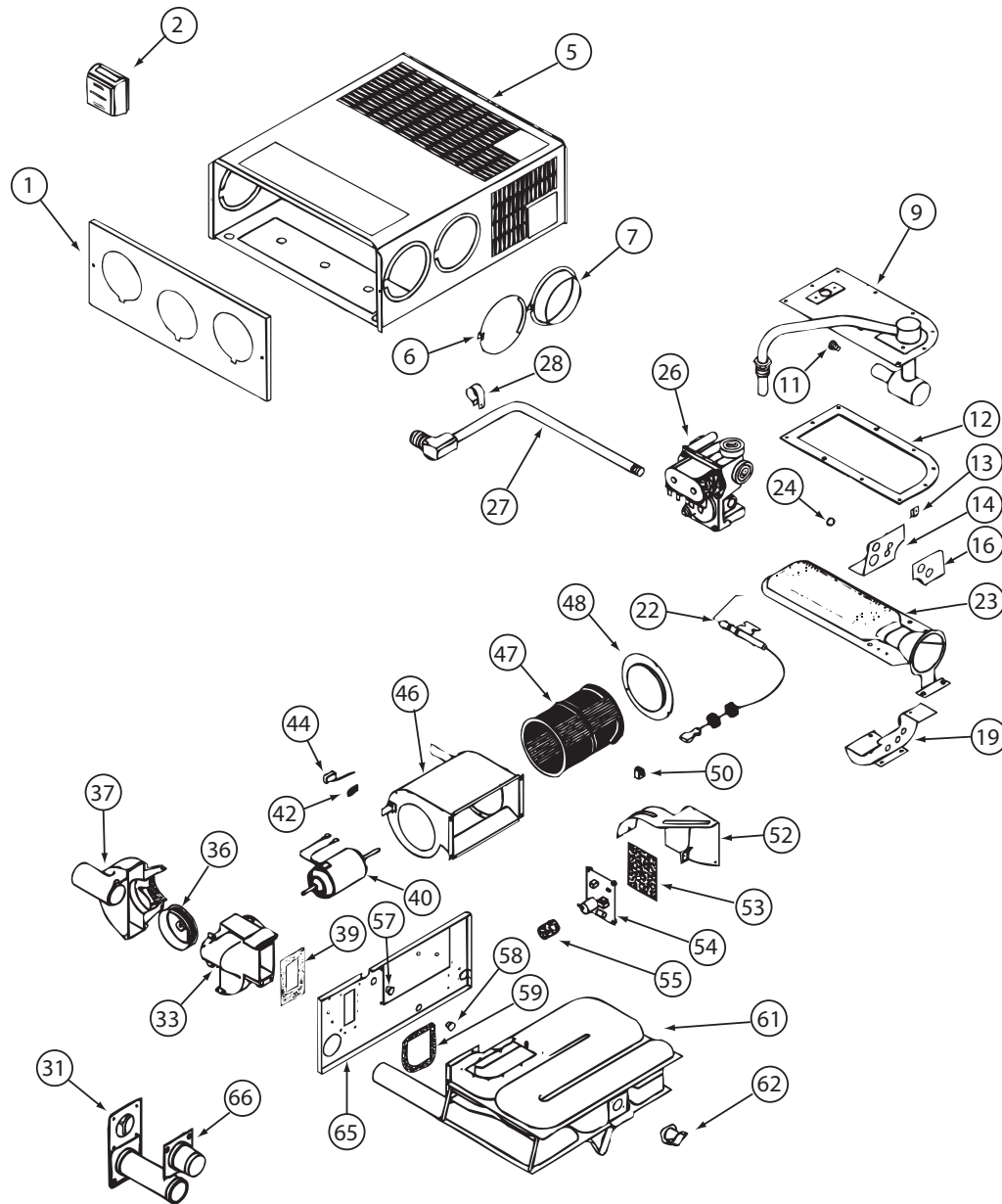


139980-01-000

139980-01-000 (CONTINUED)

KEY	PART NUMBER	U/M	DESCRIPTION	VENDOR NO.
9	139980-01-700	EA	MANIFOLD ASSEMBLY	171571
11	090039-01-703	EA	ORIFICE-MAIN BURNER	180193
12	098668-22-703	EA	GASKET - BURNER ACCESS COVER	070811
22	139980-01-701	EA	ELECTRODE	232286
23	098668-01-703	EA	BURNER ASSEMBLY	010762
26	098668-01-718	EA	VALVE-GAS SF S.N.974903079	161122
27	139980-01-702	EA	PIPE ASSEMBLY/GAS INLET	171574
31	098668-01-707	EA	TUBE ASSEMBLY, EXHAUST W/CAP	260231
33	139980-01-703	EA	HOUSING/COMB. - FRONT/HALF	390852
36	098668-01-706	EA	WHEEL-COMBUSTION AIR	350184
37	139980-01-704	EA	HOUSING/COMB. - REAR/HALF	390848
39	139980-01-705	EA	GASKET/FIREWALL-COMB AIR	071084
40	139980-01-706	EA	MOTOR ASSEMBLY W/GASKET	232682
42	101990-01-714	EA	GASKET-MICROSWITCH	230877
44	098668-21-700	EA	SWITCH-MICRO-W/O FLAG 3 1/4"	232261
46	139980-01-708	EA	BLOWER ASSEMBLY - ROOM AIR	390739BK
47	098668-01-711	EA	WHEEL-BLOWER, ROOM AIR	350129
48	139980-01-709	EA	ORFICE RING	390696
50	139980-01-710	EA	SWITCH - ON/OFF	232351
52	139980-01-711	EA	PANEL ASSEMBLY-MODULE BD	101663
53	139980-01-712	EA	INSULATOR - MODULE BD	070807
54	098668-22-705	EA	MODULE BD W/RELAY TIME DELAY	520820
55	139980-01-713	EA	CAP/INSULATOR-MODULE BD	070973
57	139980-01-714	EA	BUSHING - UNIVERSAL	070362
58	139980-01-715	EA	BUSHING - STRAIN RELIEF	231809
59	098668-01-716	EA	GASKET-FIREWALL,CHAMBER SIDE	070808
61	139980-01-716	EA	CHAMBER ASSEMBLY - FINAL	021149BK
62	098668-21-701	EA	SWITCH - LIMIT	232504
66	098668-01-713	EA	TUBE ASSEMBLY, INTAKE	051248
	098668-19-700	EA	DOOR/CABINET ACCESS	101888
	139980-02-700	EA	BLOWER ASM-1/2 HOUSING/OUTER	390851
	139980-02-701	EA	BLOWER ASM-1/2 HOUSING/INNER	390872

CONTACT WINNEBAGO PART SALES FOR UNLISTED COMPONENT(S)

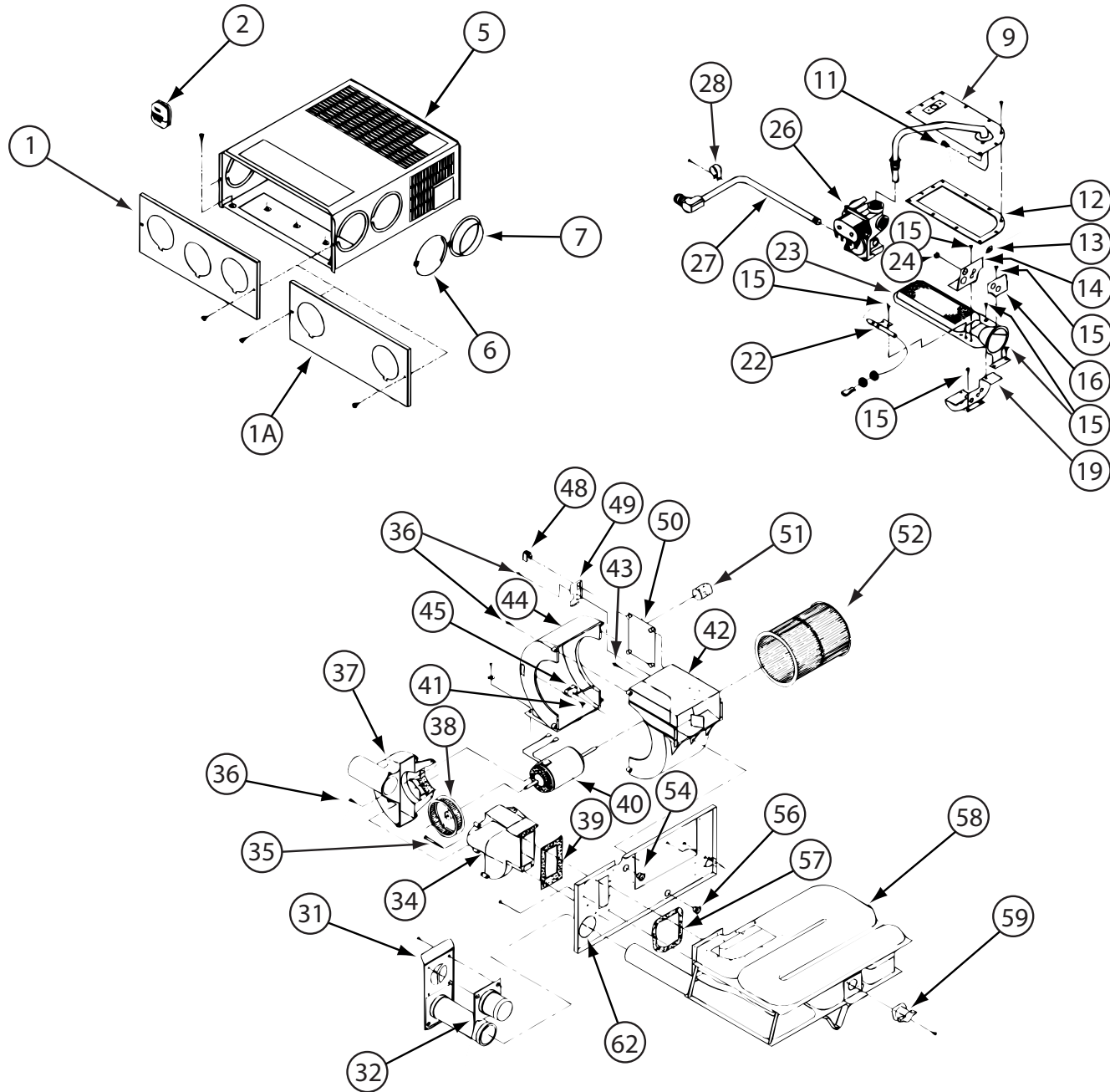


139980-02-000

139980-02-000 (CONTINUED)

KEY	PART NUMBER	U/M	DESCRIPTION	VENDOR NO.
9	139980-01-700	EA	MANIFOLD ASSEMBLY	171571
11	092300-02-701	EA	ORIFICE-MAIN BURNER (NT-30BW	180214
12	098668-22-703	EA	GASKET - BURNER ACCESS COVER	070811
22	139980-01-701	EA	ELECTRODE	232286
23	098668-02-700	EA	BURNER ASSEMBLY,SF-30 & SF35	010745
26	098668-01-718	EA	VALVE-GAS SF S.N.974903079	161122
27	139980-01-702	EA	PIPE ASSEMBLY/GAS INLET	171574
31	098668-01-707	EA	TUBE ASSEMBLY, EXHAUST W/CAP	260231
33	139980-01-703	EA	HOUSING/COMB. - FRONT/HALF	390852
36	098668-01-706	EA	WHEEL-COMBUSTION AIR	350184
37	139980-01-704	EA	HOUSING/COMB. - REAR/HALF	390848
39	139980-01-705	EA	GASKET/FIREWALL-COMB AIR	071084
40	139980-01-706	EA	MOTOR ASSEMBLY W/GASKET	232682
42	101990-01-714	EA	GASKET-MICROSWITCH	230877
44	098668-21-700	EA	SWITCH-MICRO-W/O FLAG 3 1/4"	232261
46	139980-01-708	EA	BLOWER ASSEMBLY - ROOM AIR	390739BK
47	098668-01-711	EA	WHEEL-BLOWER, ROOM AIR	350129
48	139980-01-709	EA	ORFICE RING	390696
50	139980-01-710	EA	SWITCH - ON/OFF	232351
52	139980-01-711	EA	PANEL ASSEMBLY-MODULE BD	101663
53	139980-01-712	EA	INSULATOR - MODULE BD	070807
54	098668-22-705	EA	MODULE BD W/RELAY TIME DELAY	520820
55	139980-01-713	EA	CAP/INSULATOR-MODULE BD	070973
57	139980-01-714	EA	BUSHING - UNIVERSAL	070362
58	139980-01-715	EA	BUSHING - STRAIN RELIEF	231809
59	098668-01-716	EA	GASKET-FIREWALL,CHAMBER SIDE	070808
61	139980-01-716	EA	CHAMBER ASSEMBLY - FINAL	021149BK
62	098668-21-701	EA	SWITCH - LIMIT	232504
66	098668-01-713	EA	TUBE ASSEMBLY, INTAKE	051248
	139980-02-700	EA	BLOWER ASM-1/2 HOUSING/OUTER	390851
	139980-02-701	EA	BLOWER ASM-1/2 HOUSING/INNER	390872

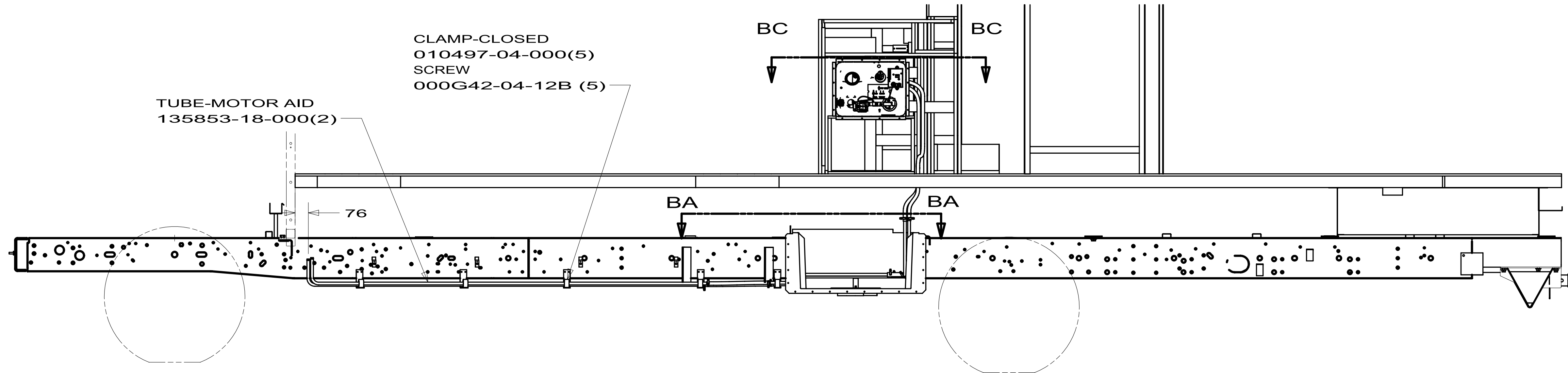
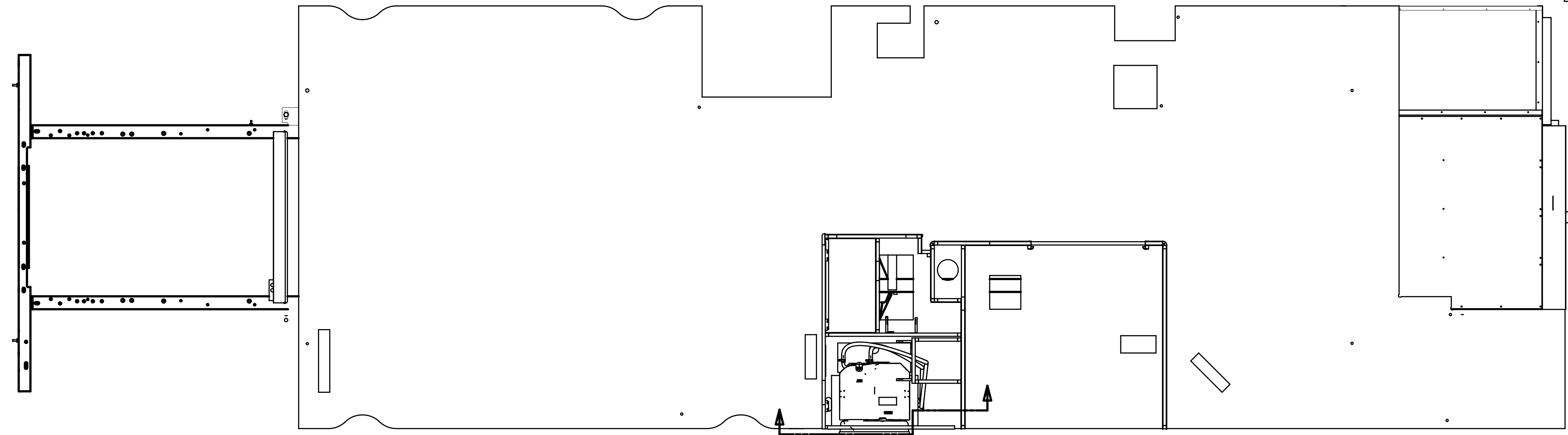
CONTACT WINNEBAGO PART SALES FOR UNLISTED COMPONENT(S)



139980-15-000

139980-15-000 (CONTNUED)

KEY	PART NUMBER	U/M	DESCRIPTION	VENDOR NO.
5	098668-20-701	EA	CABINET - 30,000	101889
7	075696-02-703	EA	COLLAR-DUCT	050715
11	139980-15-703	EA	ORFICE - MAIN BURNER	180305
14	143563-02-702	EA	PLATE-SECONDARY AIR/TOP BACK	063198
16	143563-02-703	EA	PLATE-SECONDARY AIR/TOP FRT	062933
19	143563-02-704	EA	PLATE-SECONDARY AIR/BOTTOM	062935
22	139980-01-701	EA	ELECTRODE	232286
23	139980-15-704	EA	BURNER ASSEMBLY	010767
26	098668-01-718	EA	VALVE-GAS SF S.N.974903079	161122
31	139980-15-705	EA	VENT CAP & EXHAUST TUBE ASM	260553
32	098668-01-713	EA	TUBE ASSEMBLY, INTAKE	051248
34	139980-01-703	EA	COMBUSTION AIR HOUS FRT/HALF	390852
37	139980-15-701	EA	HOUSING/COMB/AIR - REAR/HALF	390849
38	139980-15-702	EA	WHEEL-COMBUSTION AIR	350189
39	139980-01-705	EA	GASKET/FIREWALL-COMB AIR	071084
40	139980-01-706	EA	MOTOR ASSEMBLY W/GASKET	232682
42	139980-02-701	EA	BLOWER ASM-1/2 HOUSING/INNER	390872
44	139980-02-700	EA	BLOWER ASM-1/2 HOUSING/OUTER	390851
45	098668-21-700	EA	SWITCH-MICRO-W/O FLAG 3 1/4"	232261
48	139980-01-710	EA	SWITCH - ON/OFF	232351
50	098668-22-705	EA	MODULE BD W/RELAY TIME DELAY	520820
51	139980-01-713	EA	CAP/INSULATOR-MODULE BD	070973
52	098668-01-711	EA	WHEEL-BLOWER, ROOM AIR	350129
59	139980-15-700	EA	SWITCH - LIMIT	232503
CONTACT WINNEBAGO PART SALES FOR UNLISTED COMPONENTS				



7. TORQUE TO 20±3 IN-LBS.

6. WHERE THE MOTOR AID TUBE COMES IN CONTACT WITH ANY CHASSIS COMPONENT OTHER THAN THE FRAME RAILS, IT SHALL BE PROTECTED BY CONVOLUTED CONDUIT 041953-02-000.

5. ANTIFREEZE - COOLANT
 007316-01-000 (ALL-GREEN COLOR, EXCEPT CHEVY ORANGE)
 007316-02-000 (CHEVY-ORANGE COLOR)
 50-50 MIXTURE ANTIFREEZE & CLEAN WATER.

4. SEE HEATER & A/C INSTL TO CONNECT HOSES FROM ENGINE.

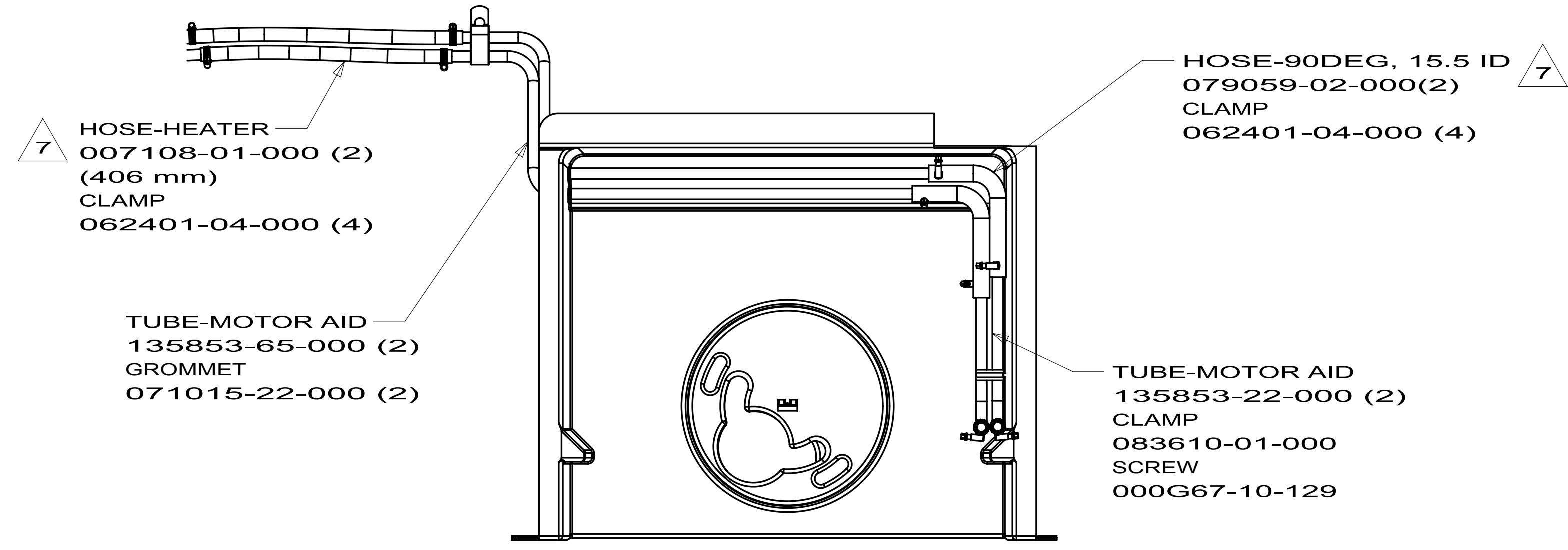
3. SLIP JOINTS TO HAVE AN OVERLAP OF 25 mm MINIMUM.

2. SPLICE TUBES FOR MOTOR AID USING UNION 089353-01-000 AS REQUIRED.

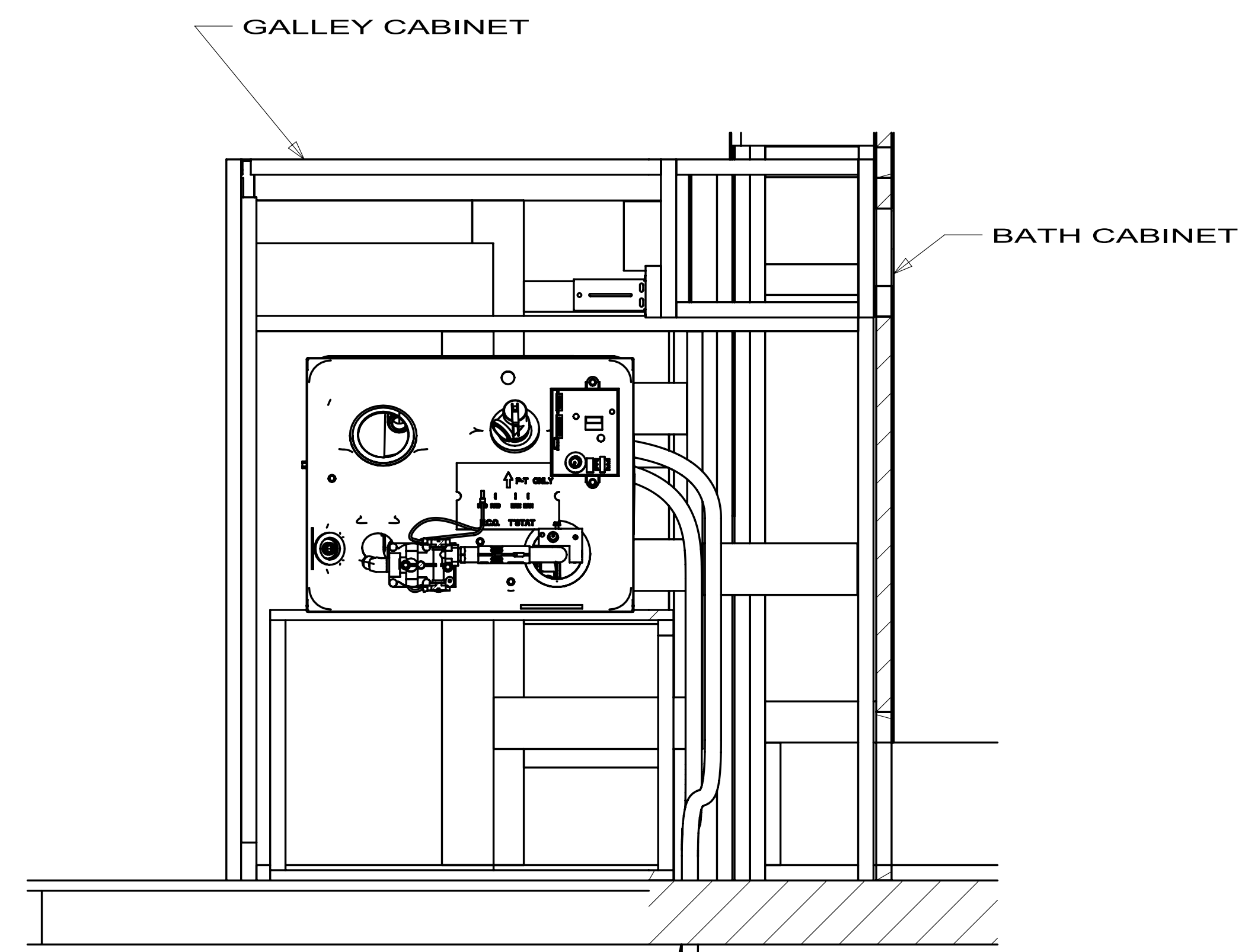
1. EXTERIOR OPENINGS AROUND PIPE TO BE SEALED WITH 069640-02-000.

NOTES:

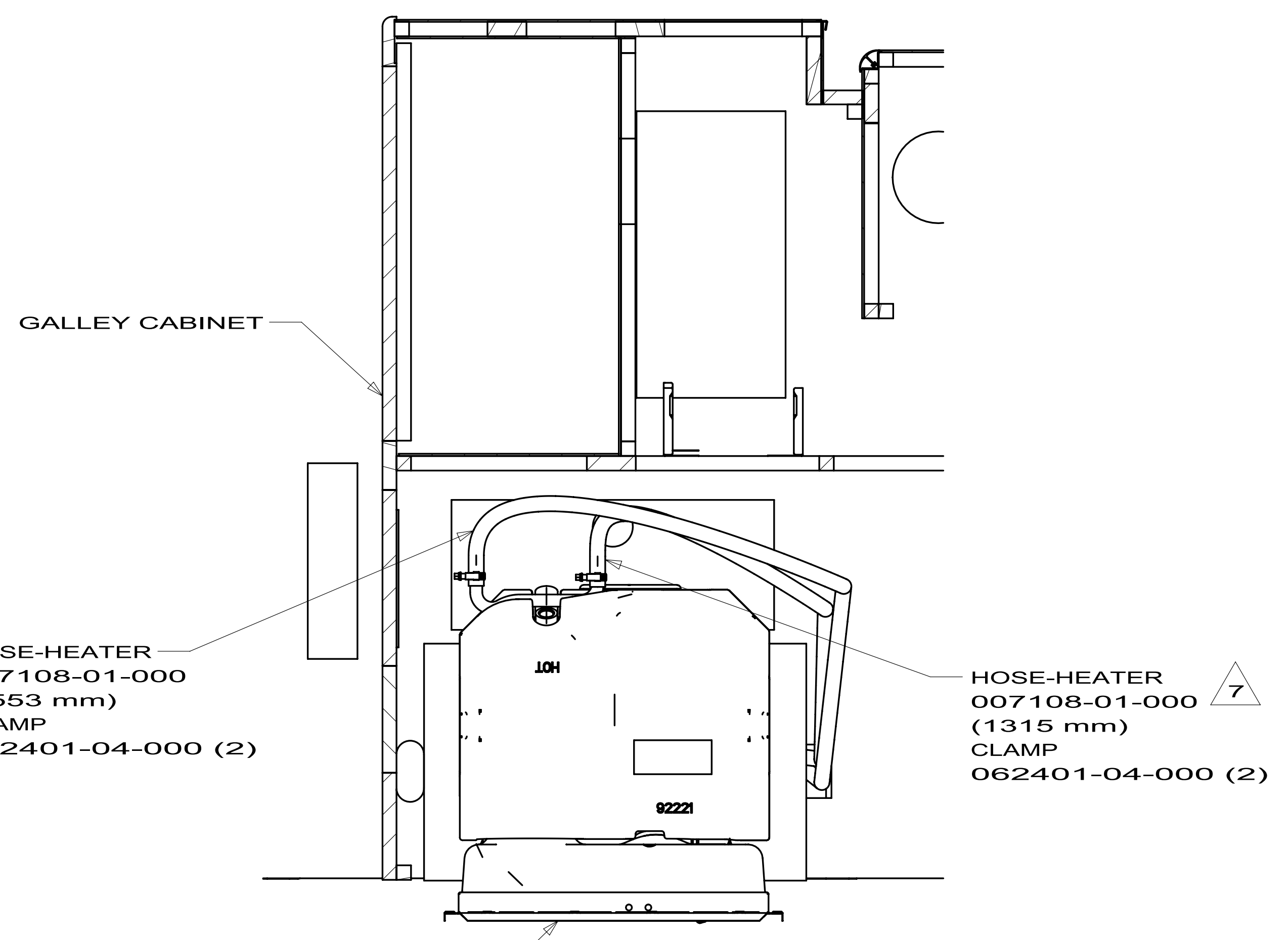
		COPYRIGHT 2009 WINNEBAGO INDUSTRIES, INC.
DTR	ORIG. DATE	ALL DIMENSIONS ARE IN MILLIMETERS
CHKR		
P.E.		
M.E.	FIRST USED	
DSNR		10 E30W
UNSPECIFIED TOLERANCES ARE: WHOLE DIM (X) : 3 ONE-PLACE (X.X) : 1.5 TWO-PLACE (X.XX) : ANGLE :		MATERIAL:
THIRD ANGLE PROJECTION		
DO NOT SCALE DRAWING		
TITLE: MOTOR AID INSTL		
SHEET 1 OF 2	PART NO 173255	REV
REF:	1	



SECTION BA-BA

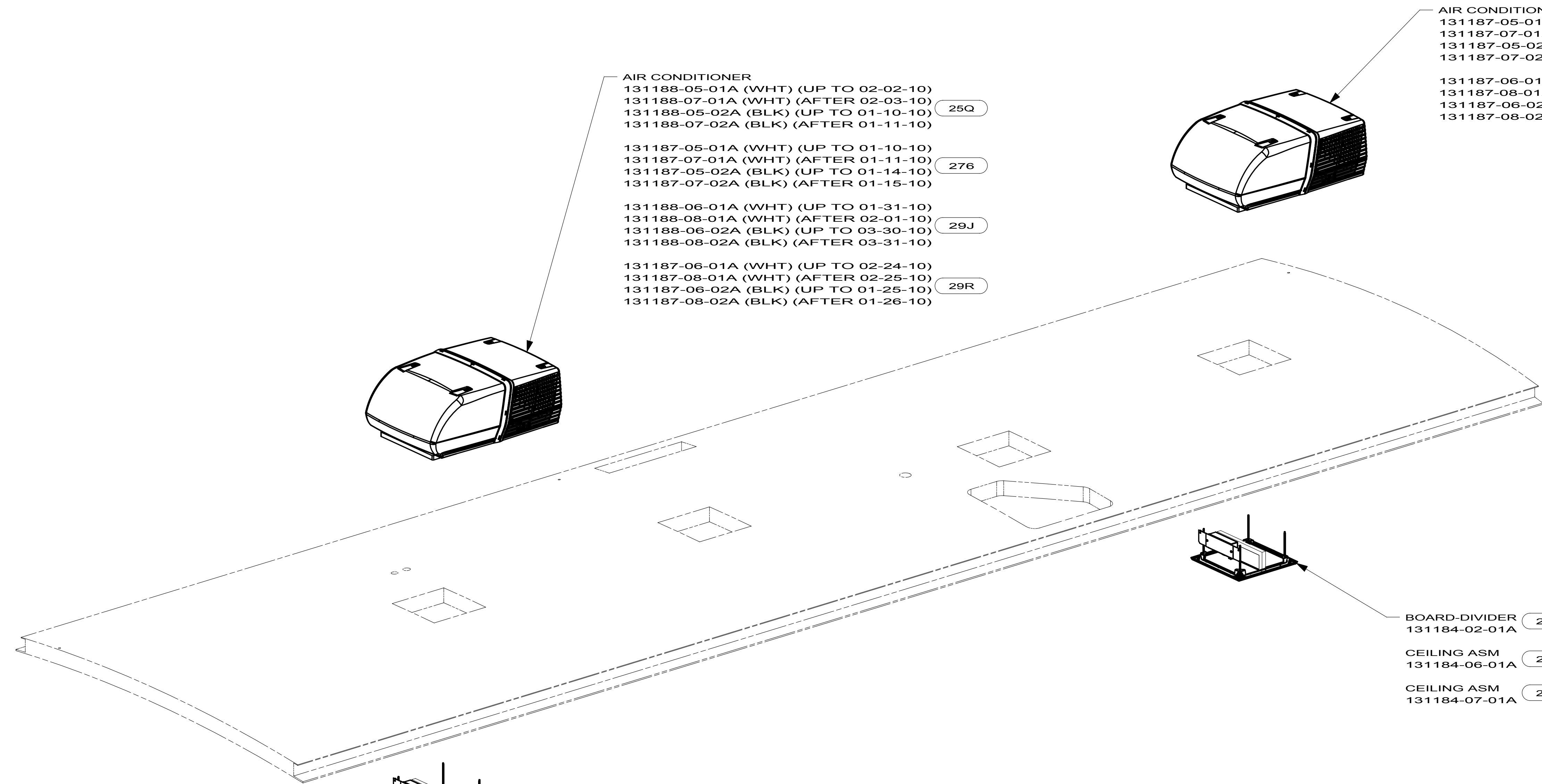


SECTION BB-BB



SECTION BC-BC

FIRST USED	10 E30W	
TITLE:	DO NOT SCALE DRAWING	
SHEET 2	PART NO	173255
	REV	



- AIR CONDITIONER**
- 131188-05-01A (WHT) (UP TO 02-02-10)
 - 131188-07-01A (WHT) (AFTER 02-03-10) **25Q**
 - 131188-05-02A (BLK) (UP TO 01-10-10)
 - 131188-07-02A (BLK) (AFTER 01-11-10)
- 131187-05-01A (WHT) (UP TO 01-10-10)
- 131187-07-01A (WHT) (AFTER 01-11-10)
 - 131187-05-02A (BLK) (UP TO 01-14-10) **276**
 - 131187-07-02A (BLK) (AFTER 01-15-10)
- 131188-06-01A (WHT) (UP TO 01-31-10)
- 131188-08-01A (WHT) (AFTER 02-01-10)
 - 131188-06-02A (BLK) (UP TO 03-30-10) **29J**
 - 131188-08-02A (BLK) (AFTER 03-31-10)
- 131187-06-01A (WHT) (UP TO 02-24-10)
- 131187-08-01A (WHT) (AFTER 02-25-10)
 - 131187-06-02A (BLK) (UP TO 01-25-10) **29R**
 - 131187-08-02A (BLK) (AFTER 01-26-10)

- AIR CONDITIONER**
- 131187-05-01A (WHT) (UP TO 01-10-10)
 - 131187-07-01A (WHT) (AFTER 01-11-10)
 - 131187-05-02A (BLK) (UP TO 01-14-10) **276**
 - 131187-07-02A (BLK) (AFTER 01-15-10)
- 131187-06-01A (WHT) (UP TO 02-24-10)
- 131187-08-01A (WHT) (AFTER 02-25-10)
 - 131187-06-02A (BLK) (UP TO 01-25-10) **29R**
 - 131187-08-02A (BLK) (AFTER 01-26-10)

- BOARD-DIVIDER** **276** **29R**
- 131184-02-01A
- CEILING ASM** **276**
- 131184-06-01A
- CEILING ASM** **29R**
- 131184-07-01A

- BOARD-DIVIDER** **25Q** **276** **29J** **29R**
- 131184-02-01A
- CEILING ASM** **25Q** **276**
- 131184-06-01A
- CEILING ASM** **29J** **29R**
- 131184-07-01A

169863-05 D-SERIES E-SERIES

- 29R** AC HEAT PUMP-2 HI EFFICIENCY
- 29J** AC HEAT PUMP-1
- 276** A/C ROOF-HI EFF (2) W/EMS
- 25Q** A/C ROOF AIR (1) 14,800 BTU
- 265** CODES/STANDARDS-CSA/CMVSS
- 1B1** CODES/STANDARDS USA

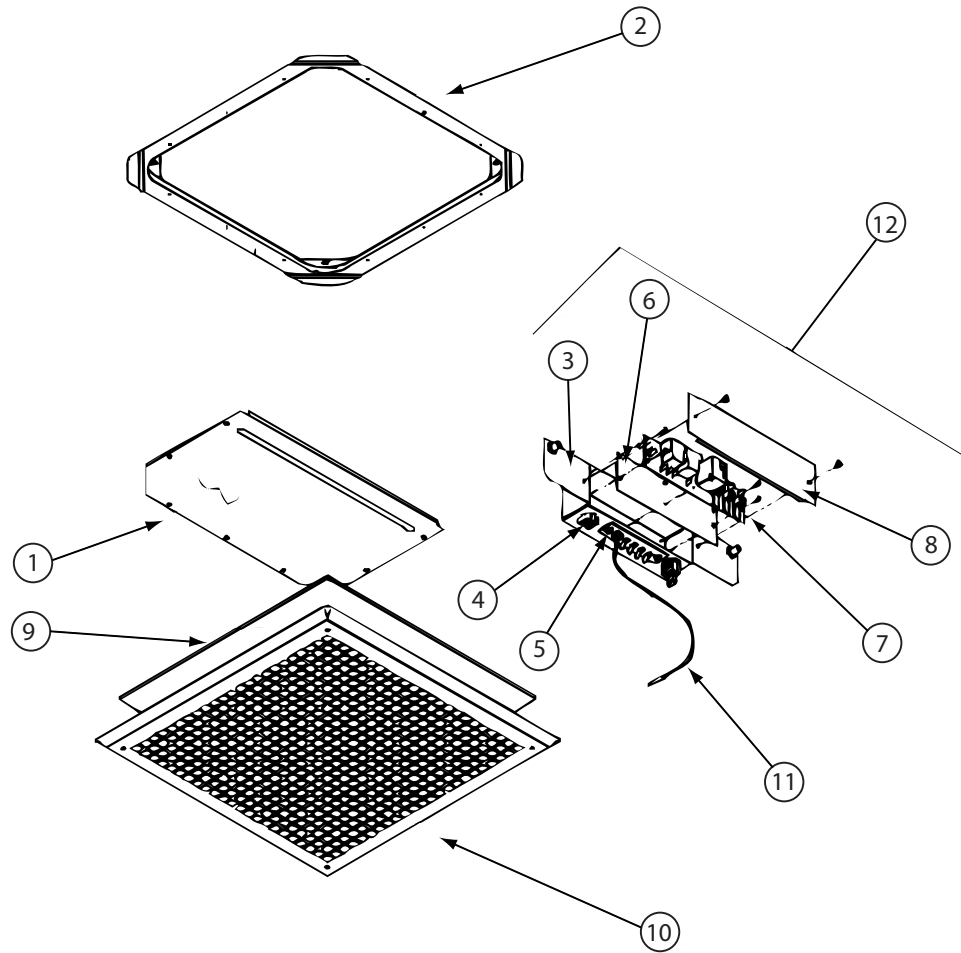
1B1 **265**

FOR ELECTRICAL
TORQUE
SPECIFICATIONS
SEE DWG NO.
128783-01-000

10 MOTORHOMES

WIRING INSTL-ROOF A/C

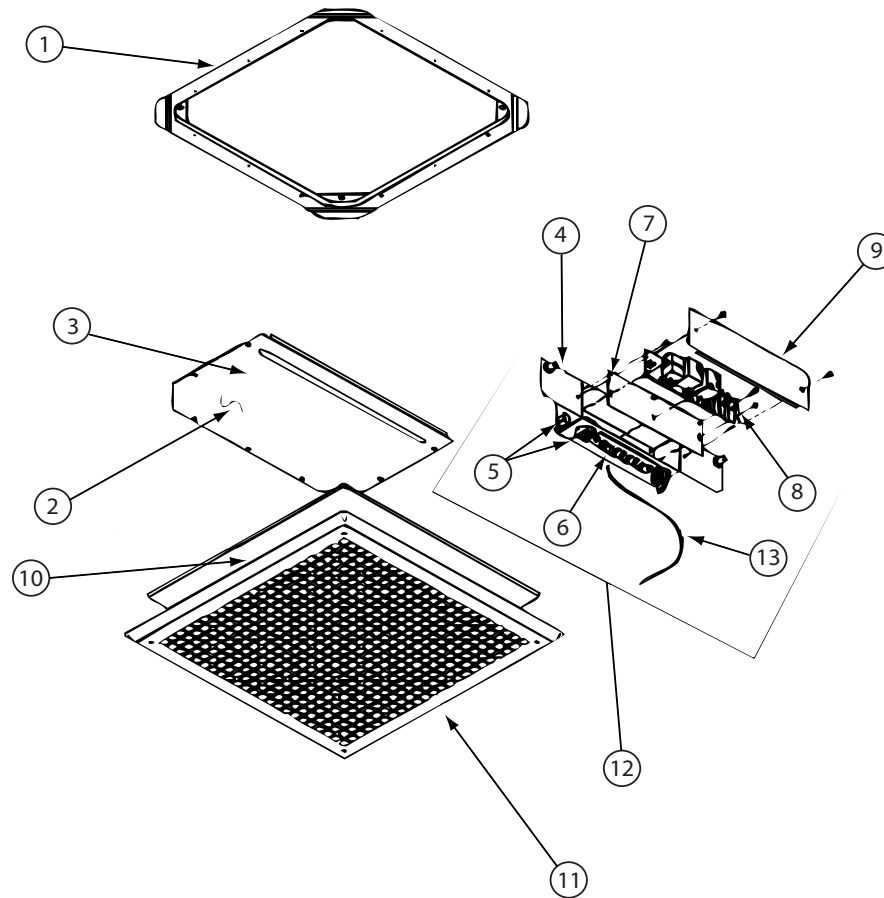
5 169863



131184-06-01A

KEY	PART NUMBER	U/M	DESCRIPTION	VENDOR NO.
4	131184-01-700	EA	PLUG ASSEMBLY	7330A389
5	131184-01-701	EA	TERMINAL BOARD	7330B3201
6	131184-01-702	EA	ISOLATOR - BLANK	7330C365
7	131184-03-700	EA	BOARD - P.C.	7330D3211
9	108892-01-703	EA	FILTER	6798A3761
10	108892-01-704	EA	GRILLE 16 3/8X16 3/8 RETURN	6798-3041
11	105620-12-719	EA	COIL SENSOR	7330A3231
12	131184-01-705	EA	JUNCTION BOX ASSEMBLY	7330B5551
	131184-01-703	EA	SMALL PARTS PKG	8330-5961
	131184-01-706	EA	NUT/WING	1200-550

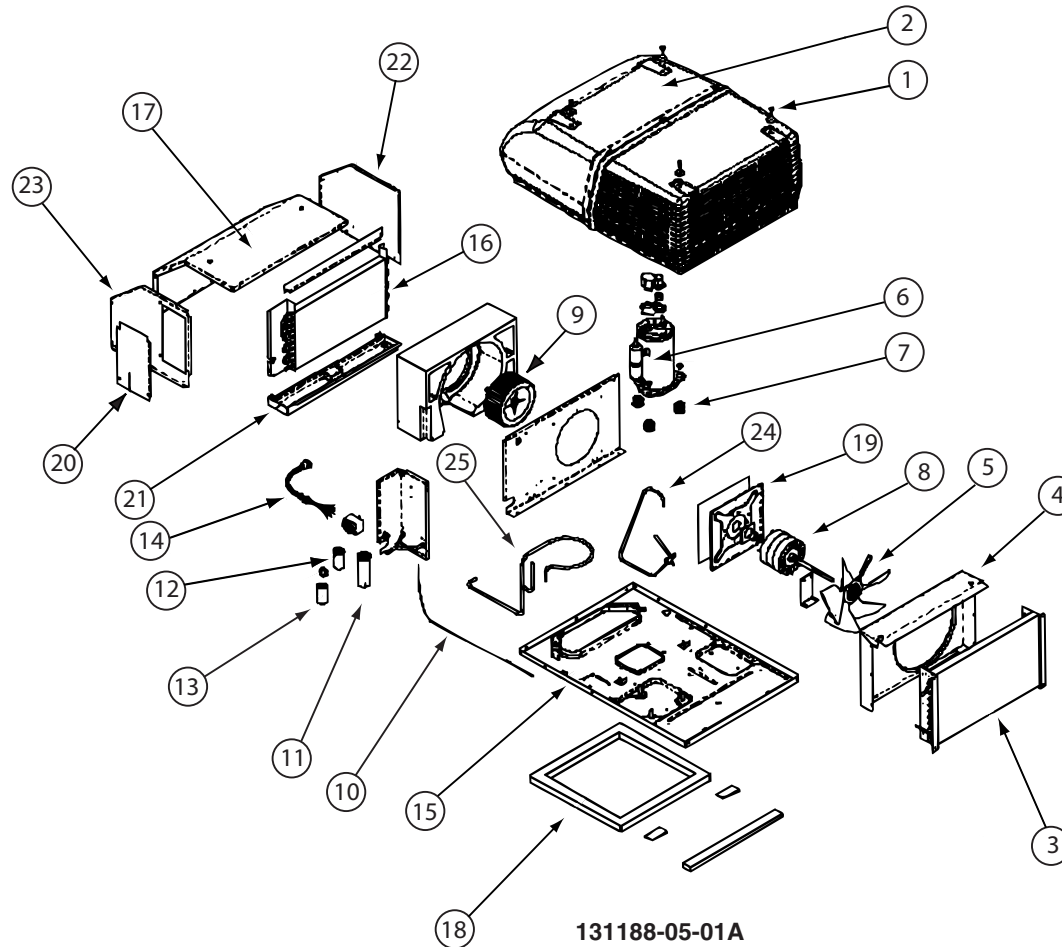
CONTACT WINNEBAGO PART SALES FOR UNLISTED COMPONENT(S)



131184-07-01A

KEY	PART NUMBER	U/M	DESCRIPTION	VENDOR NO.
4	131184-04-703	EA	BOX - JUNCTION	7330-113
5	131184-04-700	EA	PLUG ASSEMBLY	7530A340
6	131184-04-702	EA	BOARD - TERMINAL	7530B3201
7	131184-01-702	EA	ISOLATOR - BLANK	7330C365
8	131184-04-705	EA	BOARD - P.C.	7330B3311
10	108892-01-703	EA	FILTER	6798A3761
11	108892-01-704	EA	GRILLE 16 3/8X16 3/8 RETURN	6798-3041
12	131184-04-706	EA	JUNCTION BOX ASM.(HEAT PUMP)	7530-508
13	105620-12-719	EA	COIL SENSOR	7330A3231
	131184-01-706	EA	NUT/WING	1200-550
	131184-07-700	EA	SMALL PARTS PKG	8330-5951

CONTACT WINNEBAGO PART SALES FOR UNLISTED COMPONENT(S)



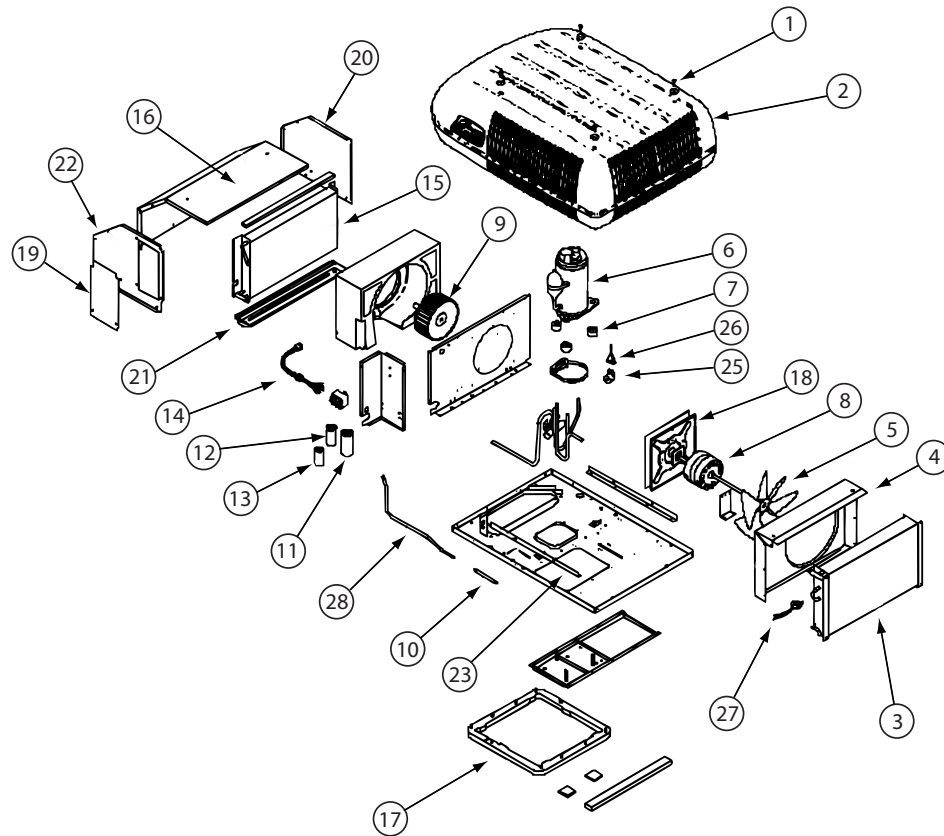
131188-05-01A

KEY	PART NUMBER	U/M	DESCRIPTION	VENDOR NO.
2	131188-05-700	EA	SHROUD-ROOF AIR/2 PIECE-WHT	8335-5261
3	115219-01-700	EA	COIL-CONDENSER	1452A1321
4	131187-03-700	EA	SHROUD FAN/INNER-LESS LOGO	6792-1071
5	093763-01-712	EA	BLADE-FAN-CONDENSER	6733-3221
6	131188-05-703	EA	COMPRESSOR (TECUMSEH)	1450B2299
7	105620-01-706	EA	MOUNTING PKG.,COMP., 3 PER	6759-3081
8	131185-01-701	EA	MOTOR (115V, 60HZ)	1468-3069
9	131185-01-702	EA	BLOWER WHEEL PACKAGE	1472-1091
11	126859-01-703	EA	CAPACITOR - RUN	1499-5671
12	093763-01-704	EA	CAPACITOR-FAN (ID/OD MOTOR)	1499-5461
13	105620-10-705	EA	PTCR (START DEVICE) - W/CAP.	8333A9021
16	131186-01-701	EA	EVAPORATOR COIL	1452-1521
18	037648-01-714	EA	GASKET PACKAGE	8332-3301
19	131185-01-704	EA	MOTOR MOUNT & SEAL KIT	8333-5151
	105620-01-705	EA	PROTECTOR-OVERLOAD, RH & LH	6759-3791
	131188-05-702	EA	SHROUD BRACKET	8333B1551

CONTACT WINNEBAGO PART SALES FOR UNLISTED COMPONENT(S)

131188-05-02A

KEY	PART NUMBER	U/M	DESCRIPTION	VENDOR NO.
2	131188-05-701	EA	SHROUD-ROOF AIR/2 PIECE-BLK	8335-5291
3	115219-01-700	EA	COIL-CONDENSER	1452A1321
4	131187-03-700	EA	SHROUD FAN/INNER-LESS LOGO	6792-1071
5	093763-01-712	EA	BLADE-FAN-CONDENSER	6733-3221
6	131188-05-703	EA	COMPRESSOR (TECUMSEH)	1450B2299
7	105620-01-706	EA	MOUNTING PKG.,COMP., 3 PER	6759-3081
8	131185-01-701	EA	MOTOR (115V, 60HZ)	1468-3069
9	131185-01-702	EA	BLOWER WHEEL PACKAGE	1472-1091
11	126859-01-703	EA	CAPACITOR - RUN	1499-5671
12	093763-01-704	EA	CAPACITOR-FAN (ID/OD MOTOR)	1499-5461
13	105620-10-705	EA	PTCR (START DEVICE) - W/CAP.	8333A9021
16	131186-01-701	EA	EVAPORATOR COIL	1452-1521
18	037648-01-714	EA	GASKET PACKAGE	8332-3301
19	131185-01-704	EA	MOTOR MOUNT & SEAL KIT	8333-5151
	105620-01-705	EA	PROTECTOR-OVERLOAD, RH & LH	6759-3791
	131188-05-702	EA	SHROUD BRACKET	8333B1551
			CONTACT WINNEBAGO PART SALES FOR UNLISTED COMPONENT(S)	



131188-06-01A

KEY	PART NUMBER	U/M	DESCRIPTION	VENDOR NO.
2	131188-05-700	EA	SHROUD-ROOF AIR/2 PIECE-WHT	8335-5261
3	131188-02-700	EA	CONDENSER COIL	1452-1441
4	131187-03-700	EA	SHROUD FAN/INNER-LESS LOGO	6792-1071
5	093763-01-712	EA	BLADE-FAN-CONDENSER	6733-3221
6	131188-05-703	EA	COMPRESSOR (TECUMSEH)	1450B2299
7	105620-01-706	EA	MOUNTING PKG.,COMP., 3 PER	6759-3081
8	131185-01-701	EA	MOTOR (115V, 60HZ)	1468-3069
9	131185-01-702	EA	BLOWER WHEEL PACKAGE	1472-1091
11	105620-12-725	EA	COMPRESSOR RUN CAPACITOR	1499-5731
12	093763-01-704	EA	CAPACITOR-FAN (ID/OD MOTOR)	1499-5461
13	105620-10-705	EA	PTCR (START DEVICE) - W/CAP.	8333A9021
15	131186-01-701	EA	EVAPORATOR COIL	1452-1521
17	037648-01-714	EA	GASKET PACKAGE	8332-3301
18	131185-01-704	EA	MOTOR MOUNT & SEAL KIT	8333-5151
25	105620-12-708	EA	COIL - SOLENOID	1460-1081
27	131188-02-706	EA	SWITCH - FREEZE	1460-2041
28	131188-02-707	EA	LIQUID LINE	7535-135
	105620-01-705	EA	PROTECTOR-OVERLOAD, RH & LH	6759-3791
	131188-05-702	EA	SHROUD BRACKET	8333B1551

CONTACT WINNEBAGO PART SALES FOR UNLISTED COMPONENT(S)

131188-06-02A

KEY	PART NUMBER	U/M	DESCRIPTION	VENDOR NO.
2	131188-05-701	EA	SHROUD-ROOF AIR/2 PIECE-BLK	8335-5291
3	131188-02-700	EA	CONDENSER COIL	1452-1441
4	131187-03-700	EA	SHROUD FAN/INNER-LESS LOGO	6792-1071
5	093763-01-712	EA	BLADE-FAN-CONDENSER	6733-3221
6	131188-05-703	EA	COMPRESSOR (TECUMSEH)	1450B2299
7	105620-01-706	EA	MOUNTING PKG.,COMP., 3 PER	6759-3081
8	131185-01-701	EA	MOTOR (115V, 60HZ)	1468-3069
9	131185-01-702	EA	BLOWER WHEEL PACKAGE	1472-1091
11	105620-12-725	EA	COMPRESSOR RUN CAPACITOR	1499-5731
12	093763-01-704	EA	CAPACITOR-FAN (ID/OD MOTOR)	1499-5461
13	105620-10-705	EA	PTCR (START DEVICE) - W/CAP.	8333A9021
15	131186-01-701	EA	EVAPORATOR COIL	1452-1521
17	037648-01-714	EA	GASKET PACKAGE	8332-3301
18	131185-01-704	EA	MOTOR MOUNT & SEAL KIT	8333-5151
25	105620-12-708	EA	COIL - SOLENOID	1460-1081
27	131188-02-706	EA	SWITCH - FREEZE	1460-2041
28	131188-02-707	EA	LIQUID LINE	7535-135
	105620-01-705	EA	PROTECTOR-OVERLOAD, RH & LH	6759-3791
	131188-05-702	EA	SHROUD BRACKET	8333B1551
			CONTACT WINNEBAGO PART SALES FOR UNLISTED COMPONENT(S)	